

Product datasheet for **TA347843**

Synaptophysin (SYP) Rabbit Polyclonal Antibody

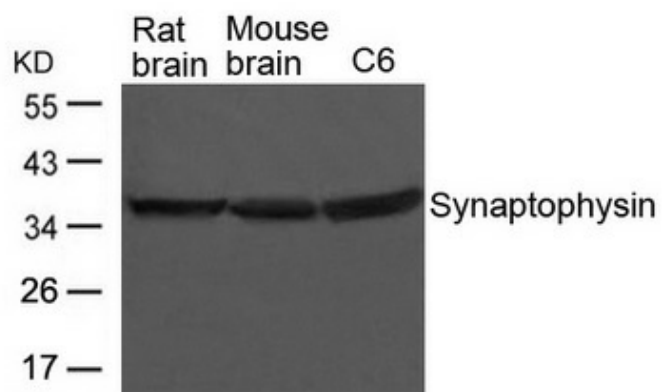
Product data:

Product Type:	Primary Antibodies
Applications:	WB
Reactivity:	Human
Host:	Rabbit
Isotype:	IgG
Clonality:	Polyclonal
Immunogen:	The immunogen for anti-Synaptophysin Antibody: Peptide sequence around aa.305~309(A-P-T-S-F) derived from Human Synaptophysin
Formulation:	Rabbit IgG in phosphate buffered saline , pH 7.4, 150mM NaCl, 0.02% sodium azide and 50% glycerol.Store at -20 ?.Stable for 12 months from date of receipt
Concentration:	lot specific
Conjugation:	Unconjugated
Storage:	Store at -20°C as received.
Stability:	Stable for 12 months from date of receipt.
Predicted Protein Size:	38kd
Gene Name:	synaptophysin
Database Link:	NP_003170 Entrez Gene 6855 Human P08247
Background:	Western blot analysis of extracts from Rat and Mouse brain tissue and C6 cells using Synaptophysin Antibody
Synonyms:	MRX96; MRXSYP
Note:	The antibody detects endogenous levels of total Synaptophysin protein.
Protein Families:	Secreted Protein, Transmembrane



[View online »](#)

Product images:



Western blot analysis of extracts from Rat and Mouse brain tissue and C6 cells using Synaptophysin Antibody