

## Product datasheet for **TA347841**

### CDX2 Rabbit Polyclonal Antibody

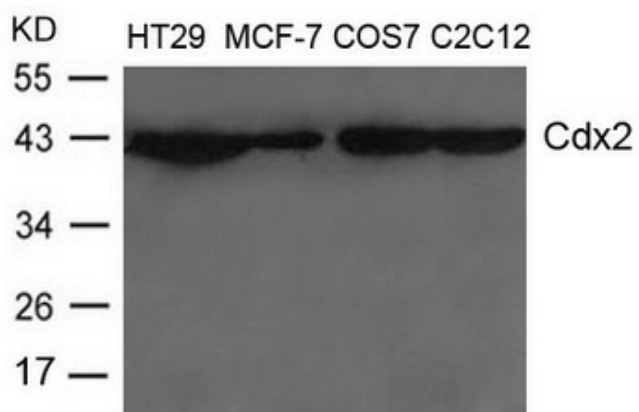
#### Product data:

Product Type:	Primary Antibodies
Applications:	WB
Recommended Dilution:	WB: 1:500-1:1000
Reactivity:	Human, Mouse, Rat
Host:	Rabbit
Isotype:	IgG
Clonality:	Polyclonal
Immunogen:	The immunogen for anti-Cdx2 Antibody: Peptide sequence around aa.12~16(S-M-Y-P-S) derived from Human Cdx2
Formulation:	Rabbit IgG in phosphate buffered saline , pH 7.4, 150mM NaCl, 0.02% sodium azide and 50% glycerol.Store at -20 ?.Stable for 12 months from date of receipt
Concentration:	lot specific
Conjugation:	Unconjugated
Storage:	Store at -20°C as received.
Stability:	Stable for 12 months from date of receipt.
Predicted Protein Size:	40kd
Gene Name:	caudal type homeobox 2
Database Link:	<a href="#">NP_001256</a> <a href="#">Entrez Gene 12591 Mouse</a> <a href="#">Entrez Gene 66019 Rat</a> <a href="#">Entrez Gene 1045 Human</a> <a href="#">Q99626</a>
Background:	Involved in the transcriptional regulation of multiple genes expressed in the intestinal epithelium. Important in broad range of functions from early differentiation to maintenance of the intestinal epithelial lining of both the small and large intestine.
Synonyms:	AS; CDX-3; CDX2; CDX3
Note:	The antibody detects endogenous levels of total Cdx2 protein.
Protein Families:	Adult stem cells, Druggable Genome, Embryonic stem cells, ES Cell Differentiation/IPS, Transcription Factors



[View online »](#)

## Product images:



Western blot analysis of extracts from HT-29, MCF-7, COS-7 and C2C12 cells using Cdx2 Antibody