

## Product datasheet for **TA347840**

### PRDM1 Rabbit Polyclonal Antibody

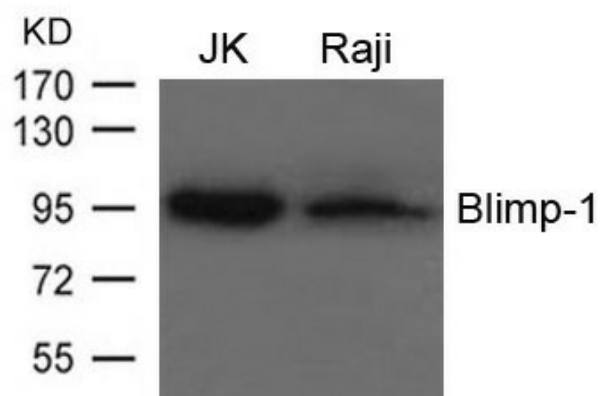
#### Product data:

Product Type:	Primary Antibodies
Applications:	WB
Recommended Dilution:	WB: 1:500-1:1000
Reactivity:	Human, Mouse, Rat
Host:	Rabbit
Isotype:	IgG
Clonality:	Polyclonal
Immunogen:	The immunogen for anti-Blimp-1 Antibody: Peptide sequence around aa.124~128(D-T-V-P-K) derived from Human Blimp-1
Formulation:	Rabbit IgG in phosphate buffered saline , pH 7.4, 150mM NaCl, 0.02% sodium azide and 50% glycerol.Store at -20 ?.Stable for 12 months from date of receipt
Concentration:	lot specific
Conjugation:	Unconjugated
Storage:	Store at -20°C as received.
Stability:	Stable for 12 months from date of receipt.
Predicted Protein Size:	95 100kd
Gene Name:	PR domain 1
Database Link:	<a href="#">NP_001189</a> <a href="#">Entrez Gene 12142 Mouse</a> <a href="#">Entrez Gene 309871 Rat</a> <a href="#">Entrez Gene 639 Human</a> <a href="#">O75626</a>
Background:	Transcriptional repressor that binds specifically to the PRDI element in the promoter of the beta-interferon gene. Drives the maturation of B-lymphocytes into Ig secreting cells. "NANOS3 function in human germ cell development."
Synonyms:	BLIMP1; PRDI-BF1
Note:	The antibody detects endogenous levels of total Blimp-1 protein.
Protein Families:	Transcription Factors



[View online »](#)

## Product images:



Western blot analysis of extracts from JK and Raji cells using Blimp-1 Antibody