

Product datasheet for **TA347839**

Myelin Basic Protein (MBP) Rabbit Polyclonal Antibody

Product data:

Product Type:	Primary Antibodies
Applications:	WB
Recommended Dilution:	WB: 1:500-1:1000
Reactivity:	Human, Mouse, Rat
Host:	Rabbit
Isotype:	IgG
Clonality:	Polyclonal
Immunogen:	The immunogen for anti-MBP(myelin basic protein) Antibody: Peptide sequence around aa.291~295(G-G-R-D-S)
Formulation:	Rabbit IgG in phosphate buffered saline , pH 7.4, 150mM NaCl, 0.02% sodium azide and 50% glycerol.Store at -20 ?.Stable for 12 months from date of receipt
Concentration:	lot specific
Conjugation:	Unconjugated
Storage:	Store at -20°C as received.
Stability:	Stable for 12 months from date of receipt.
Predicted Protein Size:	14~33kd
Gene Name:	myelin basic protein
Database Link:	NP_001020252 Entrez Gene 17196 Mouse Entrez Gene 24547 Rat Entrez Gene 4155 Human P02686



[View online »](#)

Background:

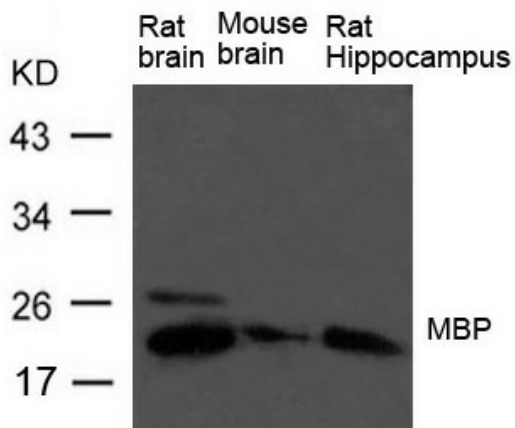
The classic group of MBP isoforms (isoform 4-isoform 14) are with PLP the most abundant protein components of the myelin membrane in the CNS. They have a role in both its formation and stabilization. The smaller isoforms might have an important role in remyelination of denuded axons in multiple sclerosis. The non-classic group of MBP isoforms (isoform 1-isoform 3/Golli-MBPs) may preferentially have a role in the early developing brain long before myelination, maybe as components of transcriptional complexes, and may also be involved in signaling pathways in T-cells and neural cells. Differential splicing events combined with optional post-translational modifications give a wide spectrum of isomers, with each of them potentially having a specialized function. Induces T-cell proliferation.

Synonyms:

MGC99675

Note:

The antibody detects endogenous level of total MBP(myelin basic protein) protein.

Product images:

Western blot analysis of extract from Rat brain, Mouse brain and Rat hippocampus Tissue using MBP Antibody