

Product datasheet for **TA347838**

CNPase (CNP) Rabbit Polyclonal Antibody

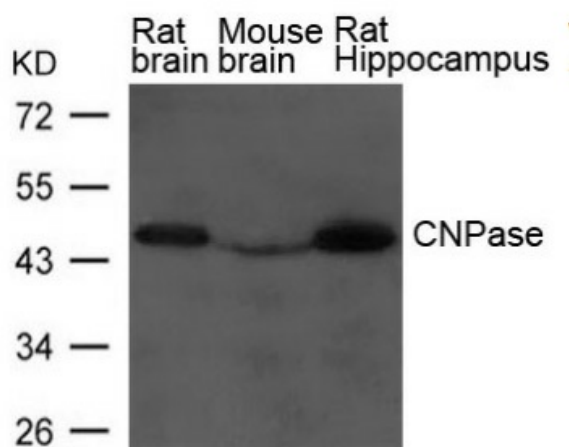
Product data:

Product Type:	Primary Antibodies
Applications:	WB
Recommended Dilution:	WB: 1:500-1:1000
Reactivity:	Human, Mouse
Host:	Rabbit
Isotype:	IgG
Clonality:	Polyclonal
Immunogen:	The immunogen for anti-CNPase Antibody: Peptide sequence around aa.80~84 (M-V-S-A-D
Formulation:	Rabbit IgG in phosphate buffered saline , pH 7.4, 150mM NaCl, 0.02% sodium azide and 50% glycerol.Store at -20 ?.Stable for 12 months from date of receipt
Concentration:	lot specific
Conjugation:	Unconjugated
Storage:	Store at -20°C as received.
Stability:	Stable for 12 months from date of receipt.
Predicted Protein Size:	47kd
Gene Name:	2',3'-cyclic nucleotide 3' phosphodiesterase
Database Link:	NP_149124 Entrez Gene 12799 Mouse Entrez Gene 1267 Human P09543
Background:	Nucleoside 2',3'-cyclic phosphate + H ₂ O = nucleoside 2'-phosphate.
Synonyms:	CNP1
Note:	The antibody detects endogenous level of total CNPase protein.



[View online »](#)

Product images:



Western blot analysis of extract from Rat brain, Mouse brain and Rat hippocampus Tissue using CNPase Antibody