

Product datasheet for **TA347837**

FOXP1 Rabbit Polyclonal Antibody

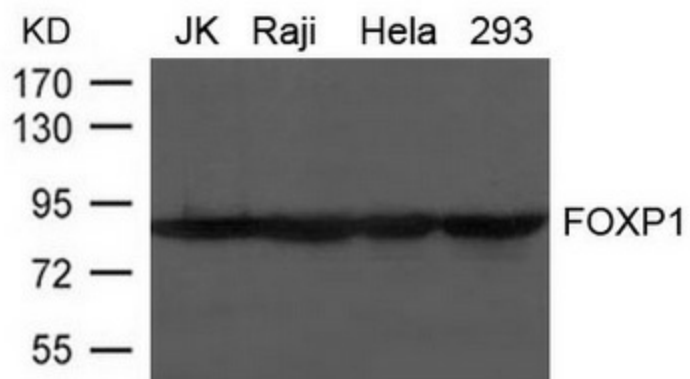
Product data:

Product Type:	Primary Antibodies
Applications:	WB
Recommended Dilution:	WB: 1:500-1:1000
Reactivity:	Human, Mouse, Rat
Host:	Rabbit
Isotype:	IgG
Clonality:	Polyclonal
Immunogen:	The immunogen for anti-FOXP1 Antibody: Peptide sequence around aa. 669~673 (D-E-P-V-N
Formulation:	Rabbit IgG in phosphate buffered saline , pH 7.4, 150mM NaCl, 0.02% sodium azide and 50% glycerol.Store at -20 ?.Stable for 12 months from date of receipt
Concentration:	lot specific
Conjugation:	Unconjugated
Storage:	Store at -20°C as received.
Stability:	Stable for 12 months from date of receipt.
Predicted Protein Size:	82~90kd
Gene Name:	forkhead box P1
Database Link:	NP_116071 Entrez Gene 108655 Mouse Entrez Gene 297480 Rat Entrez Gene 27086 Human Q9H334
Background:	Transcriptional repressor. It plays an important role in the specification and differentiation of lung epithelium. Can act with CTBP1 to synergistically repress transcription but CTPBP1 is not essential. Essential transcriptional regulator of B cell development
Synonyms:	12CC4; hFKH1B; HSPC215; MFH; QRF1
Note:	The antibody detects endogenous level of total FOXP1 protein.
Protein Families:	Transcription Factors



[View online »](#)

Product images:



Western blot analysis of extract from JK, Raji, HeLa and 293 cells using FOXP1 Antibody