

Product datasheet for **TA347836**

MAP2 Rabbit Polyclonal Antibody

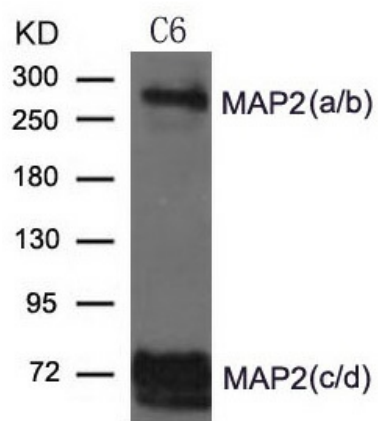
Product data:

Product Type:	Primary Antibodies
Applications:	WB
Recommended Dilution:	WB: 1:500-1:1000
Reactivity:	Human, Mouse, Rat
Host:	Rabbit
Isotype:	IgG
Clonality:	Polyclonal
Immunogen:	The immunogen for anti-MAP2 Antibody: Peptide sequence around aa.1819~1823 (T-A-A-L-A) derived from Human MAP2.
Formulation:	Rabbit IgG in phosphate buffered saline , pH 7.4, 150mM NaCl, 0.02% sodium azide and 50% glycerol.Store at -20 ?.Stable for 12 months from date of receipt
Concentration:	lot specific
Conjugation:	Unconjugated
Storage:	Store at -20°C as received.
Stability:	Stable for 12 months from date of receipt.
Predicted Protein Size:	55-75(2c/2d), 280(2a/2b)kd
Gene Name:	microtubule associated protein 2
Database Link:	NP_114033 Entrez Gene 17756 Mouse Entrez Gene 25595 Rat Entrez Gene 4133 Human P11137
Background:	The exact function of MAP2 is unknown but MAPs may stabilize the microtubules against depolymerization. They also seem to have a stiffening effect on microtubules.
Synonyms:	MAP2A; MAP2B; MAP2C
Note:	The antibody detects endogenous level of total MAP2 protein.
Protein Families:	Adult stem cells, Druggable Genome, ES Cell Differentiation/IPS



[View online »](#)

Product images:



Western blot analysis of extract from C6 cells using MAP2 Antibody