

Product datasheet for **TA347835**

WASP (WAS) Rabbit Polyclonal Antibody

Product data:

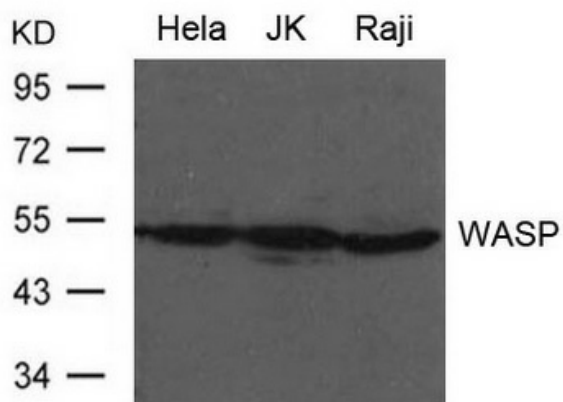
Product Type:	Primary Antibodies
Applications:	WB
Recommended Dilution:	WB: 1:500-1:1000
Reactivity:	Human, Mouse, Rat
Host:	Rabbit
Isotype:	IgG
Clonality:	Polyclonal
Immunogen:	The immunogen for anti-WASP Antibody: Peptide sequence around aa.289~293 (L-I-Y-D-F) derived from Human WASP.
Formulation:	Rabbit IgG in phosphate buffered saline , pH 7.4, 150mM NaCl, 0.02% sodium azide and 50% glycerol.Store at -20 ?.Stable for 12 months from date of receipt
Concentration:	lot specific
Conjugation:	Unconjugated
Storage:	Store at -20°C as received.
Stability:	Stable for 12 months from date of receipt.
Predicted Protein Size:	53kd
Gene Name:	Wiskott-Aldrich syndrome
Database Link:	NP_000368 Entrez Gene 22376 Mouse Entrez Gene 317371 Rat Entrez Gene 7454 Human P42768
Background:	Effector protein for Rho-type GTPases. Regulates actin filament reorganization via its interaction with the Arp2/3 complex. Important for efficient actin polymerization. Possible regulator of lymphocyte and platelet function. Mediates actin filament reorganization and the formation of actin pedestals upon infection by pathogenic bacteria.
Synonyms:	IMD2; SCNX; THC; THC1; WASP; WASPA
Note:	The antibody detects endogenous level of total WASP protein.
Protein Families:	Druggable Genome



[View online »](#)

Protein Pathways: Adherens junction, Chemokine signaling pathway, Fc gamma R-mediated phagocytosis, Pathogenic Escherichia coli infection, Regulation of actin cytoskeleton

Product images:



Western blot analysis of extract from HeLa, JK and Raji cells using WASP Antibody