

## Product datasheet for **TA347834**

### **RING1 Rabbit Polyclonal Antibody**

#### **Product data:**

Product Type:	Primary Antibodies
Applications:	WB
Recommended Dilution:	WB: 1:500-1:1000
Reactivity:	Human, Mouse, Rat
Host:	Rabbit
Isotype:	IgG
Clonality:	Polyclonal
Immunogen:	The immunogen for anti-Ring1A Antibody: Peptide sequence around aa.35~39( I-A-V-S-P) derived from Human Ring1A.
Formulation:	Rabbit IgG in phosphate buffered saline , pH 7.4, 150mM NaCl, 0.02% sodium azide and 50% glycerol.Store at -20 ?.Stable for 12 months from date of receipt
Concentration:	lot specific
Conjugation:	Unconjugated
Storage:	Store at -20°C as received.
Stability:	Stable for 12 months from date of receipt.
Predicted Protein Size:	58kd
Gene Name:	ring finger protein 1
Database Link:	<a href="#">NP_002922</a> <a href="#">Entrez Gene 19763 Mouse</a> <a href="#">Entrez Gene 309626 Rat</a> <a href="#">Entrez Gene 6015 Human</a> <a href="#">Q06587</a>
Background:	Constitutes one of the E3 ubiquitin-protein ligases that mediate monoubiquitination of 'Lys-119' of histone H2A, thereby playing a central role in histone code and gene regulation. H2A 'Lys-119' ubiquitination gives a specific tag for epigenetic transcriptional repression and participates in X chromosome inactivation of female mammals. Essential component of the Polycomb group (PcG) multiprotein PRC1 complex, a complex required to maintain the transcriptionally repressive state of many genes, including Hox genes, throughout development.
Synonyms:	RING1A; RNF1

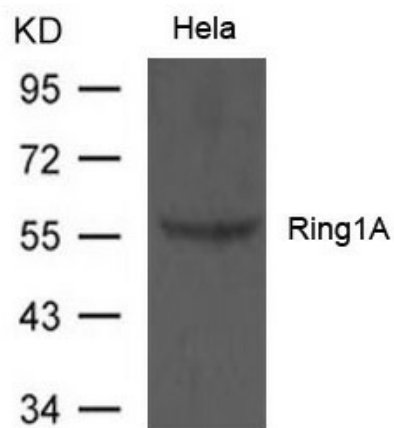


[View online »](#)

**Note:** The antibody detects endogenous level of total Ring1A protein.

**Protein Families:** Druggable Genome, Transcription Factors

**Product images:**



Western blot analysis of extract from HeLa cells using Ring1A Antibody