

Product datasheet for **TA347833**

Rab5 (RAB5A) Rabbit Polyclonal Antibody

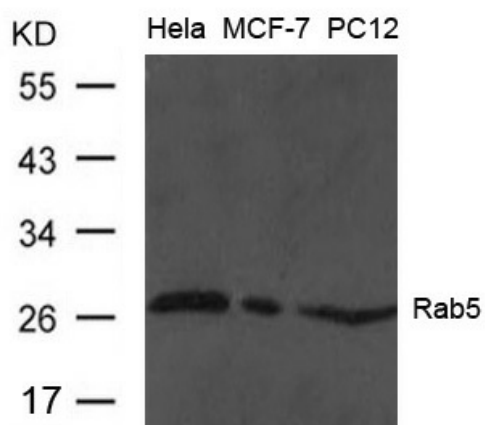
Product data:

Product Type:	Primary Antibodies
Applications:	WB
Recommended Dilution:	WB: 1:500-1:1000
Reactivity:	Human, Mouse, Rat
Host:	Rabbit
Isotype:	IgG
Clonality:	Polyclonal
Immunogen:	The immunogen for anti-Rab5 Antibody: Peptide sequence around aa.188~192(N-P-G-A-N) derived from Human Rab5.
Formulation:	Rabbit IgG in phosphate buffered saline , pH 7.4, 150mM NaCl, 0.02% sodium azide and 50% glycerol.Store at -20 ?.Stable for 12 months from date of receipt
Concentration:	lot specific
Conjugation:	Unconjugated
Storage:	Store at -20°C as received.
Stability:	Stable for 12 months from date of receipt.
Predicted Protein Size:	25kd
Gene Name:	RAB5A, member RAS oncogene family
Database Link:	NP_004153 Entrez Gene 64633 RatEntrez Gene 271457 MouseEntrez Gene 5868 Human P20339
Background:	Required for the fusion of plasma membranes and early endosomes.
Synonyms:	RAB5
Note:	The antibody detects endogenous level of total Rab5 protein.
Protein Families:	Druggable Genome
Protein Pathways:	Amyotrophic lateral sclerosis (ALS), Endocytosis



[View online »](#)

Product images:



Western blot analysis of extract from HeLa, MCF and PC12 cells using Rab5 Antibody