

Product datasheet for **TA347832**

LIN28B Rabbit Polyclonal Antibody

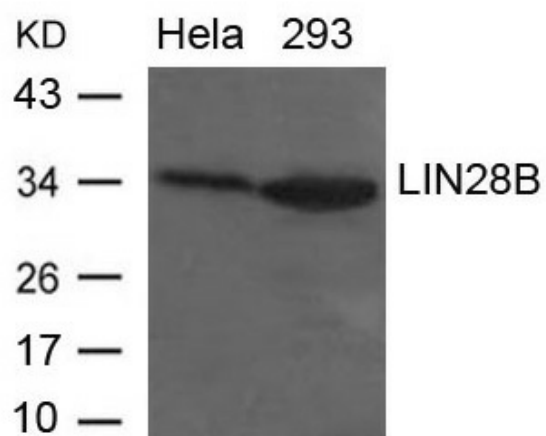
Product data:

Product Type:	Primary Antibodies
Applications:	WB
Recommended Dilution:	WB: 1:500-1:1000
Reactivity:	Human
Host:	Rabbit
Isotype:	IgG
Clonality:	Polyclonal
Immunogen:	The immunogen for anti-LIN28B Antibody: Peptide sequence around aa.242~246(P-S-V-Q-K) derived from Human LIN28B
Formulation:	Rabbit IgG in phosphate buffered saline , pH 7.4, 150mM NaCl, 0.02% sodium azide and 50% glycerol.Store at -20 ?.Stable for 12 months from date of receipt
Concentration:	lot specific
Conjugation:	Unconjugated
Storage:	Store at -20°C as received.
Stability:	Stable for 12 months from date of receipt.
Predicted Protein Size:	21 32kd
Gene Name:	lin-28 homolog B
Database Link:	NP_001004317 Entrez Gene 389421 Human Q6ZN17
Background:	Acts as a suppressor of microRNA (miRNA) biogenesis by specifically binding the precursor let-7 (pre-let-7), a miRNA precursor. Acts by binding pre-let-7 and recruiting ZCCHC11/TUT4 uridylyltransferase, leading to the terminal uridylation of pre-let-7. Uridylated pre-let-7 miRNAs fail to be processed by Dicer and undergo degradation. Specifically recognizes the 5'-GGAG-3' motif in the terminal loop of pre-let-7.
Synonyms:	CSDD2
Note:	The antibody detects endogenous levels of total LIN28B protein.



[View online »](#)

Product images:



Western blot analysis of extracts from HeLa and 293 cells using LIN28B Antibody