

## Product datasheet for **TA347830**

### Neuroserpin (SERPINI1) Rabbit Polyclonal Antibody

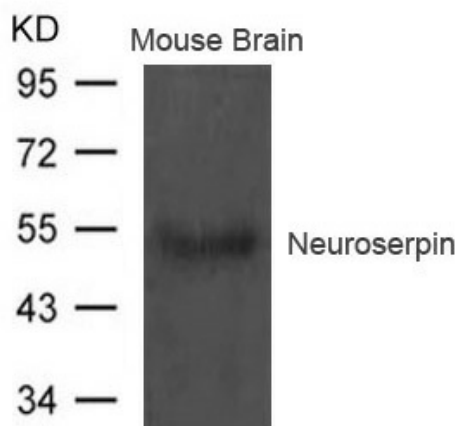
#### Product data:

Product Type:	Primary Antibodies
Applications:	WB
Reactivity:	Human, Mouse, Rat
Host:	Rabbit
Isotype:	IgG
Clonality:	Polyclonal
Immunogen:	The immunogen for anti-Neuroserpin Antibody: Peptide sequence around aa.402~406(T-S-G-H-D) derived from Human Neuroserpin.
Formulation:	Rabbit IgG in phosphate buffered saline , pH 7.4, 150mM NaCl, 0.02% sodium azide and 50% glycerol.Store at -20 ?.Stable for 12 months from date of receipt
Concentration:	lot specific
Conjugation:	Unconjugated
Storage:	Store at -20°C as received.
Stability:	Stable for 12 months from date of receipt.
Predicted Protein Size:	55kd
Gene Name:	serpin family I member 1
Database Link:	<a href="#">NP_001116224</a> <a href="#">Entrez Gene 20713 Mouse</a> <a href="#">Entrez Gene 116459 Rat</a> <a href="#">Entrez Gene 5274 Human</a> <a href="#">Q99574</a>
Background:	Serine protease inhibitor that inhibits plasminogen activators and plasmin but not thrombin. May be involved in the formation or reorganization of synaptic connections as well as for synaptic plasticity in the adult nervous system. May protect neurons from cell damage by tissue-type plasminogen activator.
Synonyms:	neuroserpin; PI12
Note:	The antibody detects endogenous level of total Neuroserpin protein.
Protein Families:	Druggable Genome, Secreted Protein



[View online »](#)

Product images:



Western blot analysis of extract from Mouse brain tissue using Neuroserpin Antibody