

Product datasheet for **TA347828**

FOXP2 Rabbit Polyclonal Antibody

Product data:

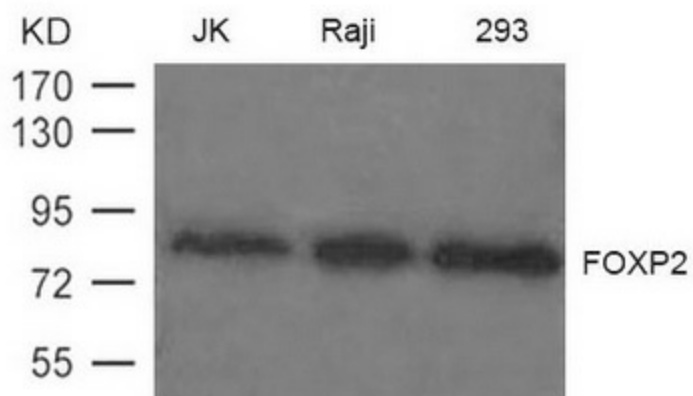
| | |
|-------------------------|--|
| Product Type: | Primary Antibodies |
| Applications: | WB |
| Recommended Dilution: | WB: 1:500-1:1000 |
| Reactivity: | Human, Mouse |
| Host: | Rabbit |
| Isotype: | IgG |
| Clonality: | Polyclonal |
| Immunogen: | The immunogen for anti-FOXP2 Antibody: Peptide sequence around aa.707~711(E-E-P-L-S) derived from Human FOXP2. |
| Formulation: | Rabbit IgG in phosphate buffered saline , pH 7.4, 150mM NaCl, 0.02% sodium azide and 50% glycerol.Store at -20 ?.Stable for 12 months from date of receipt |
| Concentration: | lot specific |
| Conjugation: | Unconjugated |
| Storage: | Store at -20°C as received. |
| Stability: | Stable for 12 months from date of receipt. |
| Predicted Protein Size: | 85kd |
| Gene Name: | forkhead box P2 |
| Database Link: | NP_683697 Entrez Gene 114142 MouseEntrez Gene 93986 Human O15409 |
| Background: | Transcriptional repressor that may play a role in the specification and differentiation of lung epithelium. May also play a role in developing neural, gastrointestinal and cardiovascular tissues. Can act with CTBP1 to synergistically repress transcription but CTPBP1 is not essential. Involved in neural mechanisms mediating the development of speech and language. |
| Synonyms: | CAGH44; SPCH1; TNRC10 |
| Note: | The antibody detects endogenous level of total FOXP2 protein. |



[View online »](#)

Protein Families: Transcription Factors

Product images:



Western blot analysis of extract from JK, Raji and 293 cells using FOXP2