

Product datasheet for **TA347827**

ERAB (HSD17B10) Rabbit Polyclonal Antibody

Product data:

Product Type:	Primary Antibodies
Applications:	WB
Recommended Dilution:	WB: 1:500-1:1000
Reactivity:	Human, Mouse, Rat
Host:	Rabbit
Isotype:	IgG
Clonality:	Polyclonal
Immunogen:	The immunogen for anti-ERAB Antibody: Peptide sequence around aa.253~257(L-D-G-A-I)derived from Human ERAB.
Formulation:	Rabbit IgG in phosphate buffered saline , pH 7.4, 150mM NaCl, 0.02% sodium azide and 50% glycerol.Store at -20 ?.Stable for 12 months from date of receipt
Concentration:	lot specific
Conjugation:	Unconjugated
Storage:	Store at -20°C as received.
Stability:	Stable for 12 months from date of receipt.
Predicted Protein Size:	27kd
Gene Name:	hydroxysteroid (17-beta) dehydrogenase 10
Database Link:	NP_004484 Entrez Gene 15108 Mouse Entrez Gene 63864 Rat Entrez Gene 3028 Human Q99714
Background:	Functions in mitochondrial tRNA maturation. Part of mitochondrial ribonuclease P, an enzyme composed of MRPP1/RG9MTD1, MRPP2/HSD17B10 and MRPP3/KIAA0391, which cleaves tRNA molecules in their 5'-ends. By interacting with intracellular amyloid-beta, it may contribute to the neuronal dysfunction associated with Alzheimer disease (AD).
Synonyms:	17b-HSD10; ABAD; CAMR; DUPXp11.22; ERAB; HADH2; HCD2; MHBD; MRPP2; MRX17; MRX31; MRXS10; SCHAD
Note:	The antibody detects endogenous level of total ERAB protein.

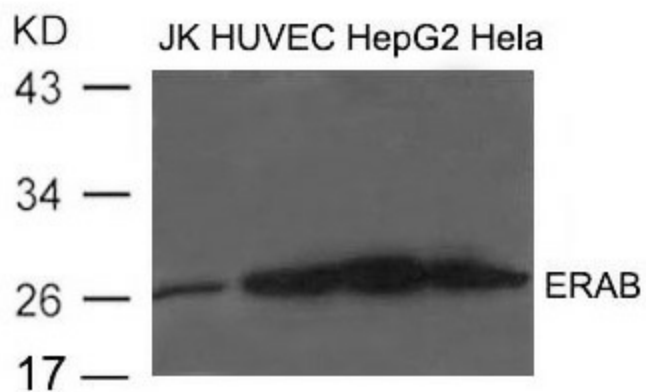


[View online »](#)

Protein Families: Druggable Genome

Protein Pathways: Alzheimer's disease, Metabolic pathways, Valine, leucine and isoleucine degradation

Product images:



Western blot analysis of extract from JK, HUVEC, HepG2 and HeLa cells using ERAB Antibody