

Product datasheet for **TA347823**

alpha smooth muscle Actin (ACTA2) Rabbit Polyclonal Antibody

Product data:

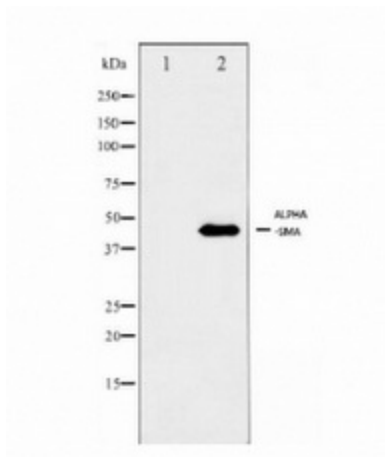
Product Type:	Primary Antibodies
Applications:	WB
Recommended Dilution:	WB: 1:500-1:1000
Reactivity:	Human, Mouse, Rat
Host:	Rabbit
Isotype:	IgG
Clonality:	Polyclonal
Immunogen:	The immunogen for anti-alpha-SMA antibody: Synthetic peptide corresponding to N terminal residues of Human alpha smooth muscle Actin.
Formulation:	Rabbit IgG in phosphate buffered saline , pH 7.4, 150mM NaCl, 0.02% sodium azide and 50% glycerol. Store at -20?. Stable for 12 months from date of receipt
Concentration:	lot specific
Conjugation:	Unconjugated
Storage:	Store at -20°C as received.
Stability:	Stable for 12 months from date of receipt.
Predicted Protein Size:	45 KD
Gene Name:	actin, alpha 2, smooth muscle, aorta
Database Link:	NP_001604 Entrez Gene 11475 Mouse Entrez Gene 81633 Rat Entrez Gene 59 Human P62736
Background:	Defects in ACTA2 are the cause of aortic aneurysm familial thoracic type 6 (AAT6) [MIM:611788]. AATs are characterized by permanent dilation of the thoracic aorta usually due to degenerative changes in the aortic wall. They are primarily associated with a characteristic histologic appearance known as 'medial necrosis' or 'Erdheim cystic medial necrosis' in which there is degeneration and fragmentation of elastic fibers, loss of smooth muscle cells, and an accumulation of basophilic ground substance.
Synonyms:	AAT6; ACTSA; MYMY5
Note:	alpha-SMA antibody detects endogenous levels of alpha-SMA.



[View online »](#)

Protein Pathways: Vascular smooth muscle contraction

Product images:



Western blot analysis on JK using alpha-SMA antibody, the lane on the left is blocked with the antigen-specific peptide.