

Product datasheet for **TA347819S**

GAPDH Rabbit Polyclonal Antibody

Product data:

Product Type:	Primary Antibodies
Applications:	WB
Recommended Dilution:	WB: 1:5000-1:50000
Reactivity:	Human, Monkey
Host:	Rabbit
Isotype:	IgG
Clonality:	Polyclonal
Immunogen:	The immunogen for anti-GAPDH Antibody: A synthesized peptide derived from human GAPDH.
Formulation:	Rabbit IgG in phosphate buffered saline , pH 7.4, 150mM NaCl, 0.02% sodium azide and 50% glycerol. Store at -20?. Stable for 12 months from date of receipt
Concentration:	lot specific
Conjugation:	Unconjugated
Storage:	Store at -20°C as received.
Stability:	Stable for 12 months from date of receipt.
Predicted Protein Size:	37KD
Gene Name:	glyceraldehyde-3-phosphate dehydrogenase
Database Link:	NP_002037 Entrez Gene 574353 Monkey Entrez Gene 2597 Human P04406
Background:	Glyceraldehyde 3 phosphate dehydrogenase (GAPDH) is well known as one of the key enzymes involved in glycolysis. GAPDH is constitutively abundant expressed in almost cell types at high levels, therefore antibodies against GAPDH are useful as loading controls for Western Blotting. Some pathology factors, such as hypoxia and diabetes, increased or decreased GAPDH expression in certain cell types.
Synonyms:	G3PD; GAPD; HEL-S-162eP
Note:	GAPDH antibody detects endogenous levels of total GAPDH protein from human and monkey. Is unsuitable for MOUSE and RAT, not yet tested in other species.

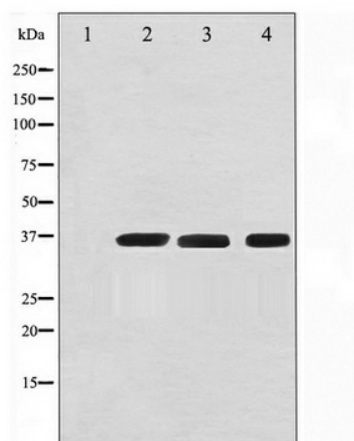


[View online »](#)

Protein Families: ES Cell Differentiation/IPS

Protein Pathways: Alzheimer's disease, Glycolysis / Gluconeogenesis, Metabolic pathways

Product images:



Western blot analysis of HeLa (1), Jurket (2), and COS-7 (3) with GAPDH antibody (1;50000), the lane on the left is