

## Product datasheet for **TA347811**

### H2BC9 Rabbit Polyclonal Antibody

#### Product data:

Product Type:	Primary Antibodies
Applications:	WB
Recommended Dilution:	WB: 1:500-1:2000
Reactivity:	Human, Mouse
Host:	Rabbit
Isotype:	IgG
Clonality:	Polyclonal
Immunogen:	The immunogen for anti-Histone H2B Antibody: A synthesized peptide derived from human Histone H2B
Formulation:	Rabbit IgG in phosphate buffered saline , pH 7.4, 150mM NaCl, 0.02% sodium azide and 50% glycerol. Store at -20?. Stable for 12 months from date of receipt
Concentration:	lot specific
Purification:	Immunogen affinity purified
Conjugation:	Unconjugated
Storage:	Store at -20°C as received.
Stability:	Stable for 12 months from date of receipt.
Predicted Protein Size:	14 kDa
Gene Name:	histone cluster 1, H2bh
Database Link:	<a href="#">NP_003515</a> <a href="#">Entrez Gene 319182 Mouse</a> <a href="#">Entrez Gene 8345 Human</a> <a href="#">Q93079</a>
Background:	H2BFS a core component of the nucleosome. The nucleosome, a basic organizational unit of chromosomal DNA, is octameric, consisting of two molecules each of histones H2B, H2A, H3, H4. The octamer wraps approximately 147 bp of DNA. Nucleosomes wrap and compact DNA into chromatin, limiting DNA accessibility to the cellular machineries which require DNA as a template. Histones thereby play a central role in transcription regulation, DNA repair, DNA replication and chromosomal stability.
Synonyms:	H2B; H2BFJ; j

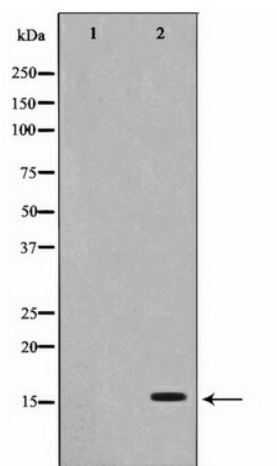


[View online »](#)

**Note:** Histone H2B Antibody detects endogenous levels of Histone H2B

**Protein Pathways:** Systemic lupus erythematosus

**Product images:**



Western blot analysis on COS7 cell lysate using Histone H2B Antibody