

Product datasheet for **TA347807**

KAT3A / CBP (CREBBP) Rabbit Polyclonal Antibody

Product data:

Product Type:	Primary Antibodies
Applications:	WB
Recommended Dilution:	WB: 1:500-1:2000
Reactivity:	Human, Mouse, Rat
Host:	Rabbit
Isotype:	IgG
Clonality:	Polyclonal
Immunogen:	The immunogen for anti-CBP Antibody: A synthesized peptide derived from human CBP
Formulation:	Rabbit IgG in phosphate buffered saline , pH 7.4, 150mM NaCl, 0.02% sodium azide and 50% glycerol. Store at -20?. Stable for 12 months from date of receipt
Concentration:	lot specific
Purification:	Immunogen affinity purified
Conjugation:	Unconjugated
Storage:	Store at -20°C as received.
Stability:	Stable for 12 months from date of receipt.
Predicted Protein Size:	265 kDa
Gene Name:	CREB binding protein
Database Link:	NP_004371 Entrez Gene 12914 MouseEntrez Gene 54244 RatEntrez Gene 1387 Human Q92793



[View online »](#)

Background: CBP a protein acetyltransferase that can transcriptionally activate histones. Acetylates the NCOA3 coactivator. Binds specifically to phosphorylated CREB1 and enhances its transcriptional activity toward cAMP-responsive genes. Methylation of the KIX domain by CARM1 blocks association with CREB, blocking CREB signaling, and activating the apoptotic response. Found in a complex containing NCOA2, NCOA3, IKKA, IKKB, and IKBKG. Probably part of a complex with HIF1A and EP300. Interacts with the C-terminal region of CITED4. The TAZ-type 1 domain interacts with HIF1A. Interacts with MAF, SRCAP, CARM1, ELF3, MLLT7/FOXO4, N4BP2, NCOA1, NCOA3, NCOA6, PCAF, PELP1, PML, SMAD1, SMAD2, SMAD3, SPIB and TRERF1. Interacts with HTLV-1 Tax, p30II, and HIV-1 Tat. Interacts with KLF1;

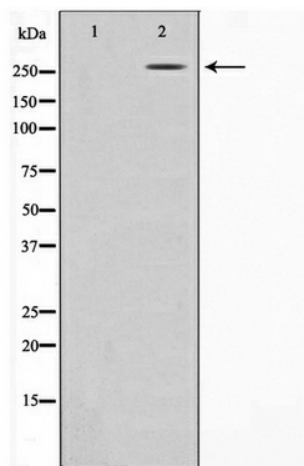
Synonyms: CBP; KAT3A; RSTS

Note: CBP Antibody detects endogenous levels of CBP

Protein Families: Druggable Genome

Protein Pathways: Adherens junction, Cell cycle, Huntington's disease, Jak-STAT signaling pathway, Long-term potentiation, Melanogenesis, Notch signaling pathway, Pathways in cancer, Prostate cancer, Renal cell carcinoma, TGF-beta signaling pathway, Wnt signaling pathway

Product images:



Western blot analysis on HeLa cell lysate using CBP Antibody