

Product datasheet for **TA347801**

PRAK (MAPKAPK5) Rabbit Polyclonal Antibody

Product data:

Product Type:	Primary Antibodies
Applications:	WB
Recommended Dilution:	WB: 1:500-1:2000
Reactivity:	Human, Mouse
Host:	Rabbit
Isotype:	IgG
Clonality:	Polyclonal
Immunogen:	The immunogen for anti-MAPKAPK5 Antibody: A synthesized peptide derived from human MAPKAPK5
Formulation:	Rabbit IgG in phosphate buffered saline , pH 7.4, 150mM NaCl, 0.02% sodium azide and 50% glycerol. Store at -20?. Stable for 12 months from date of receipt
Concentration:	lot specific
Purification:	Immunogen affinity purified
Conjugation:	Unconjugated
Storage:	Store at -20°C as received.
Stability:	Stable for 12 months from date of receipt.
Predicted Protein Size:	60 kDa
Gene Name:	mitogen-activated protein kinase-activated protein kinase 5
Database Link:	NP_003659 Entrez Gene 17165 Mouse Entrez Gene 8550 Human Q8IW41
Background:	The protein encoded by this gene is a member of the serine/threonine kinase family. In response to cellular stress and proinflammatory cytokines, this kinase is activated through its phosphorylation by MAP kinases including MAPK1/ERK, MAPK14/p38-alpha, and MAPK11/p38-beta. In vitro, this kinase phosphorylates heat shock protein HSP27 at its physiologically relevant sites. Two alternately spliced transcript variants of this gene encoding distinct isoforms have been reported.
Synonyms:	MAPKAP-K5; MK-5; MK5; PRAK



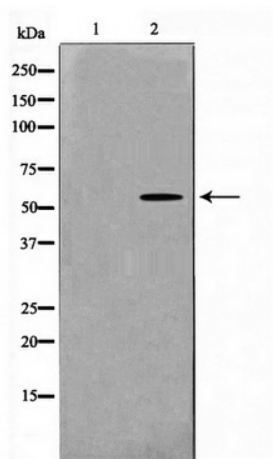
[View online »](#)

Note: MAPKAPK5 Antibody detects endogenous levels of MAPKAPK5

Protein Families: Druggable Genome, Protein Kinase

Protein Pathways: MAPK signaling pathway

Product images:



Western blot analysis on K562 cell lysate using MAPKAPK5 Antibody