

Product datasheet for **TA347799**

Syndecan 4 (SDC4) Rabbit Polyclonal Antibody

Product data:

| | |
|-------------------------|--------------------------------------------------------------------------------------------------------------------------------------------------------------------------------------------------------------------------------------------------------------------------------------------------------------------------------------------------------------------|
| Product Type: | Primary Antibodies |
| Applications: | WB |
| Recommended Dilution: | WB: 1:500-1:2000 |
| Reactivity: | Human, Mouse, Rat |
| Host: | Rabbit |
| Isotype: | IgG |
| Clonality: | Polyclonal |
| Immunogen: | The immunogen for anti-Syndecan4 Antibody: A synthesized peptide derived from human Syndecan4 |
| Formulation: | Rabbit IgG in phosphate buffered saline , pH 7.4, 150mM NaCl, 0.02% sodium azide and 50% glycerol. Store at -20?. Stable for 12 months from date of receipt |
| Concentration: | lot specific |
| Purification: | Immunogen affinity purified |
| Conjugation: | Unconjugated |
| Storage: | Store at -20°C as received. |
| Stability: | Stable for 12 months from date of receipt. |
| Predicted Protein Size: | 22 kDa |
| Gene Name: | syndecan 4 |
| Database Link: | NP_002990 Entrez Gene 20971 Mouse Entrez Gene 24771 Rat Entrez Gene 6385 Human P31431 |
| Background: | The protein encoded by this gene is a transmembrane (type I) heparan sulfate proteoglycan that functions as a receptor in intracellular signaling. The encoded protein is found as a homodimer and is a member of the syndecan proteoglycan family. This gene is found on chromosome 20, while a pseudogene has been found on chromosome 22. SwissProt Information |
| Synonyms: | SYND4 |



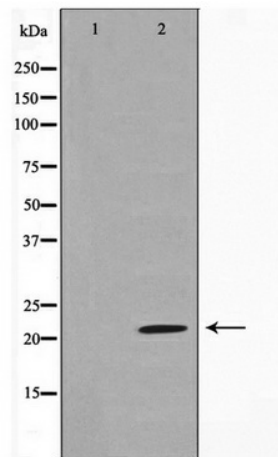
[View online »](#)

Note: Syndecan4 Antibody detects endogenous levels of Syndecan4

Protein Families: Druggable Genome, Transmembrane

Protein Pathways: Cell adhesion molecules (CAMs), ECM-receptor interaction

Product images:



Western blot analysis on HepG2 cell lysate using Syndecan4 Antibody