

Product datasheet for **TA347798**

Glycerol kinase (GK) Rabbit Polyclonal Antibody

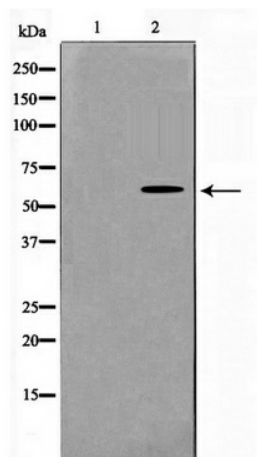
Product data:

Product Type:	Primary Antibodies
Applications:	WB
Recommended Dilution:	WB: 1:500-1:2000
Reactivity:	Human, Mouse, Rat
Host:	Rabbit
Isotype:	IgG
Clonality:	Polyclonal
Immunogen:	The immunogen for anti-GK Antibody: A synthesized peptide derived from human GK
Formulation:	Rabbit IgG in phosphate buffered saline , pH 7.4, 150mM NaCl, 0.02% sodium azide and 50% glycerol. Store at -20?. Stable for 12 months from date of receipt
Concentration:	lot specific
Purification:	Immunogen affinity purified
Conjugation:	Unconjugated
Storage:	Store at -20°C as received.
Stability:	Stable for 12 months from date of receipt.
Predicted Protein Size:	57 kDa
Gene Name:	glycerol kinase
Database Link:	NP_976325 Entrez Gene 14933 Mouse Entrez Gene 79223 Rat Entrez Gene 2710 Human P32189
Background:	Glycerol kinase (EC 2.7.1.30) catalyzes the phosphorylation of glycerol by ATP, yielding ADP and glycerol-3-phosphate. [supplied by OMIM]
Synonyms:	GK1; GKD
Note:	GK Antibody detects endogenous levels of GK
Protein Families:	Druggable Genome
Protein Pathways:	Glycerolipid metabolism, Metabolic pathways, PPAR signaling pathway



[View online »](#)

Product images:



Western blot analysis on 293 cell lysate using GK Antibody