

## Product datasheet for **TA347796**

### TRH Receptor (TRHR) Rabbit Polyclonal Antibody

#### Product data:

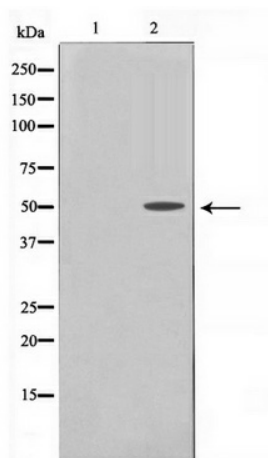
Product Type:	Primary Antibodies
Applications:	WB
Recommended Dilution:	WB: 1:500-1:2000
Reactivity:	Human, Mouse, Rat
Host:	Rabbit
Isotype:	IgG
Clonality:	Polyclonal
Immunogen:	The immunogen for anti-TRHR Antibody: A synthesized peptide derived from human TRHR
Formulation:	Rabbit IgG in phosphate buffered saline , pH 7.4, 150mM NaCl, 0.02% sodium azide and 50% glycerol. Store at -20?. Stable for 12 months from date of receipt
Concentration:	lot specific
Purification:	Immunogen affinity purified
Conjugation:	Unconjugated
Storage:	Store at -20°C as received.
Stability:	Stable for 12 months from date of receipt.
Predicted Protein Size:	50 kDa
Gene Name:	thyrotropin releasing hormone receptor
Database Link:	<a href="#">NP_003292</a> <a href="#">Entrez Gene 22045 Mouse</a> <a href="#">Entrez Gene 25570 Rat</a> <a href="#">Entrez Gene 7201 Human</a> <a href="#">P34981</a>
Background:	TRHR Receptor for thyrotropin-releasing hormone. This receptor is mediated by G proteins which activate a phosphatidylinositol-calcium second messenger system. Belongs to the G-protein coupled receptor 1 family. Note: This description may include information from UniProtKB.
Synonyms:	TRH-R
Note:	TRHR Antibody detects endogenous levels of TRHR
Protein Families:	Druggable Genome, GPCR, Transmembrane



[View online »](#)

Protein Pathways: Calcium signaling pathway, Neuroactive ligand-receptor interaction

**Product images:**



Western blot analysis on COS7 cell lysate using TRHR Antibody