

## Product datasheet for **TA347795**

### SUPT16H Rabbit Polyclonal Antibody

#### Product data:

Product Type:	Primary Antibodies
Applications:	WB
Recommended Dilution:	WB: 1:500-1:2000
Reactivity:	Human, Mouse
Host:	Rabbit
Isotype:	IgG
Clonality:	Polyclonal
Immunogen:	The immunogen for anti-SUPT16H Antibody: A synthesized peptide derived from human SUPT16H
Formulation:	Rabbit IgG in phosphate buffered saline , pH 7.4, 150mM NaCl, 0.02% sodium azide and 50% glycerol. Store at -20?. Stable for 12 months from date of receipt
Concentration:	lot specific
Purification:	Immunogen affinity purified
Conjugation:	Unconjugated
Storage:	Store at -20°C as received.
Stability:	Stable for 12 months from date of receipt.
Predicted Protein Size:	119 kDa
Gene Name:	SPT16 homolog, facilitates chromatin remodeling subunit
Database Link:	<a href="#">NP_009123</a> <a href="#">Entrez Gene 11198 Human</a> <a href="#">Q9Y5B9</a>
Background:	Transcription of protein-coding genes can be reconstituted on naked DNA with only the general transcription factors and RNA polymerase II. However, this minimal system cannot transcribe DNA packaged into chromatin, indicating that accessory factors may facilitate access to DNA. One such factor, FACT (facilitates chromatin transcription), interacts specifically with histones H2A/H2B to effect nucleosome disassembly and transcription elongation. FACT is composed of an 80 kDa subunit and a 140 kDa subunit, the latter of which is the protein encoded by this gene.



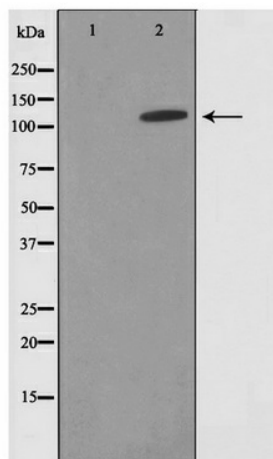
[View online »](#)

**Synonyms:** CDC68; FACTP140; SPT16

**Note:** SUPT16H Antibody detects endogenous levels of SUPT16H

**Protein Families:** Druggable Genome, Transcription Factors

**Product images:**



Western blot analysis on HepG2 cell lysate using SUPT16H Antibody