

## Product datasheet for **TA347793**

### Persephin receptor (GFRA4) Rabbit Polyclonal Antibody

#### Product data:

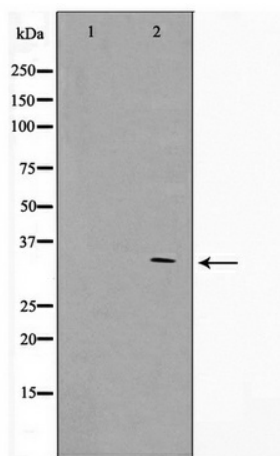
Product Type:	Primary Antibodies
Applications:	WB
Recommended Dilution:	WB: 1:500-1:2000
Reactivity:	Human
Host:	Rabbit
Isotype:	IgG
Clonality:	Polyclonal
Immunogen:	The immunogen for anti-GFRA4 Antibody: A synthesized peptide derived from human GFRA4
Formulation:	Rabbit IgG in phosphate buffered saline , pH 7.4, 150mM NaCl, 0.02% sodium azide and 50% glycerol. Store at -20?. Stable for 12 months from date of receipt
Concentration:	lot specific
Purification:	Immunogen affinity purified
Conjugation:	Unconjugated
Storage:	Store at -20°C as received.
Stability:	Stable for 12 months from date of receipt.
Predicted Protein Size:	30 kDa
Gene Name:	GDNF family receptor alpha 4
Database Link:	<a href="#">NP_665705</a> <a href="#">Entrez Gene 64096 Human</a> <a href="#">Q9GZZ7</a>
Background:	GFRA4 Receptor for persephin. Mediates the GDNF-induced autophosphorylation and activation of the RET receptor. May be important in C-cell development and, in the postnatal development of the adrenal medulla. Belongs to the GDNFR family. 3 isoforms of the human protein are produced by alternative splicing.
Synonyms:	GDNF family receptor alpha 4; GFR receptor alpha 4; OTTHUMP00000030106; OTTHUMP00000030107; persephin receptor
Note:	GFRA4 Antibody detects endogenous levels of GFRA4



[View online »](#)

Protein Families: Druggable Genome

### Product images:



Western blot analysis on HeLa cell lysate using GFRA4 Antibody