

Product datasheet for **TA347790**

Topoisomerase II alpha (TOP2A) Rabbit Polyclonal Antibody

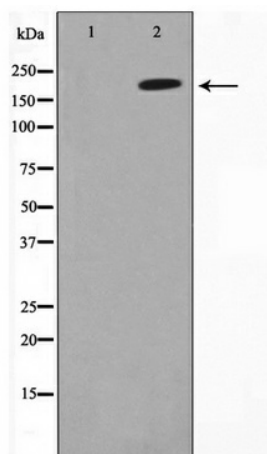
Product data:

Product Type:	Primary Antibodies
Applications:	WB
Recommended Dilution:	WB: 1:500-1:2000
Reactivity:	Human
Host:	Rabbit
Isotype:	IgG
Clonality:	Polyclonal
Immunogen:	The immunogen for anti-TOP2A Antibody: A synthesized peptide derived from human TOP2A
Formulation:	Rabbit IgG in phosphate buffered saline , pH 7.4, 150mM NaCl, 0.02% sodium azide and 50% glycerol. Store at -20?. Stable for 12 months from date of receipt
Concentration:	lot specific
Purification:	Immunogen affinity purified
Conjugation:	Unconjugated
Storage:	Store at -20°C as received.
Stability:	Stable for 12 months from date of receipt.
Predicted Protein Size:	174 kDa
Gene Name:	topoisomerase (DNA) II alpha
Database Link:	NP_001058 Entrez Gene 7153 Human P11388
Background:	DNA topoisomerase 2-alpha; DNA topoisomerase II, 170 kD; DNA topoisomerase II, alpha isozyme; TOP2; TOP2A; topoisomerase (DNA) II alpha 170kDa; TP2A
Synonyms:	TOP2; TP2A
Note:	TOP2A Antibody detects endogenous levels of TOP2A
Protein Families:	Druggable Genome



[View online »](#)

Product images:



Western blot analysis on Jurkat cell lysate using TOP2A Antibody