

Product datasheet for **TA347789**

ZNF148 Rabbit Polyclonal Antibody

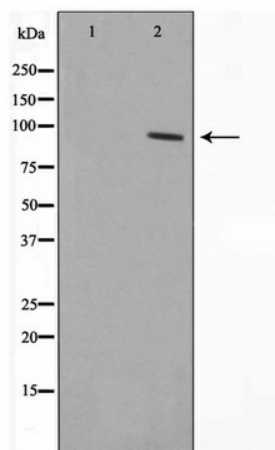
Product data:

Product Type:	Primary Antibodies
Applications:	WB
Recommended Dilution:	WB: 1:500-1:2000
Reactivity:	Human, Mouse, Rat
Host:	Rabbit
Isotype:	IgG
Clonality:	Polyclonal
Immunogen:	The immunogen for anti-ZNF148 Antibody: A synthesized peptide derived from human ZNF148
Formulation:	Rabbit IgG in phosphate buffered saline , pH 7.4, 150mM NaCl, 0.02% sodium azide and 50% glycerol. Store at -20?. Stable for 12 months from date of receipt
Concentration:	lot specific
Purification:	Immunogen affinity purified
Conjugation:	Unconjugated
Storage:	Store at -20°C as received.
Stability:	Stable for 12 months from date of receipt.
Predicted Protein Size:	89 kDa
Gene Name:	zinc finger protein 148
Database Link:	NP_068799 Entrez Gene 7707 Human Q9UQR1
Background:	ZNF148 a transcription factor. Represses the transcription of a number of genes including gastrin, stromelysin and enolase. Binds to the G-rich box in the enhancer region of these genes. Belongs to the krueppel C2H2-type zinc-finger protein family.
Synonyms:	BERF-1; BFCOL1; HT-BETA; pHZ-52; ZBP-89; ZFP148
Note:	ZNF148 Antibody detects endogenous levels of ZNF148
Protein Families:	Transcription Factors



[View online »](#)

Product images:



Western blot analysis on HepG2 cell lysate using ZNF148 Antibody