

## Product datasheet for **TA347787**

### Cytokeratin 15 (KRT15) Rabbit Polyclonal Antibody

#### Product data:

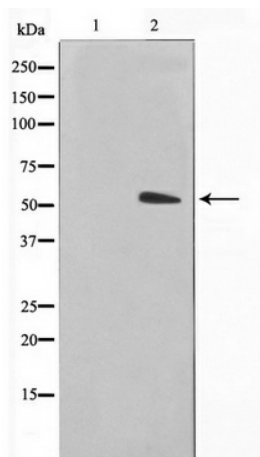
Product Type:	Primary Antibodies
Applications:	WB
Recommended Dilution:	WB: 1:500-1:2000
Reactivity:	Human, Mouse, Rat
Host:	Rabbit
Isotype:	IgG
Clonality:	Polyclonal
Immunogen:	The immunogen for anti-Keratin 15 Antibody: A synthesized peptide derived from human Keratin 15
Formulation:	Rabbit IgG in phosphate buffered saline , pH 7.4, 150mM NaCl, 0.02% sodium azide and 50% glycerol. Store at -20?. Stable for 12 months from date of receipt
Concentration:	lot specific
Purification:	Immunogen affinity purified
Conjugation:	Unconjugated
Storage:	Store at -20°C as received.
Stability:	Stable for 12 months from date of receipt.
Predicted Protein Size:	50 kDa
Gene Name:	keratin 15
Database Link:	<a href="#">NP_002266</a> <a href="#">Entrez Gene 16665 Mouse</a> <a href="#">Entrez Gene 287700 Rat</a> <a href="#">Entrez Gene 3866 Human</a> <a href="#">P19012</a>
Background:	K15 a type I cytoskeletal keratin. The keratins are intermediate filament proteins responsible for the structural integrity of epithelial cells and are subdivided into cytokeratins and hair keratins. There are two types of cytoskeletal and microfibrillar keratin: type I (acidic; 40-55 kDa) [K9 to K20] and type II (neutral to basic; 56-70 kDa) [K1 to K8]. Both a basic and an acidic keratin are required for filament assembly. Note: This description may include information from UniProtKB.
Synonyms:	CK15; K1CO; K15



[View online »](#)

Note: Keratin 15 Antibody detects endogenous levels of Keratin 15

### Product images:



Western blot analysis on COS7 cell lysate using Keratin 15 Antibody