

Product datasheet for **TA347785**

MOK protein kinase (MOK) Rabbit Polyclonal Antibody

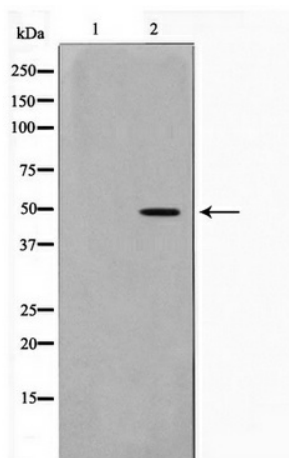
Product data:

Product Type:	Primary Antibodies
Applications:	WB
Recommended Dilution:	WB: 1:500-1:2000
Reactivity:	Human
Host:	Rabbit
Isotype:	IgG
Clonality:	Polyclonal
Immunogen:	The immunogen for anti-MOK Antibody: A synthesized peptide derived from human MOK
Formulation:	Rabbit IgG in phosphate buffered saline , pH 7.4, 150mM NaCl, 0.02% sodium azide and 50% glycerol. Store at -20?. Stable for 12 months from date of receipt
Concentration:	lot specific
Purification:	Immunogen affinity purified
Conjugation:	Unconjugated
Storage:	Store at -20°C as received.
Stability:	Stable for 12 months from date of receipt.
Predicted Protein Size:	48 kDa
Gene Name:	MOK protein kinase
Database Link:	NP_001258940 Entrez Gene 5891 Human Q9UQ07
Background:	MOK a CMGC protein kinase of the RCK family. Possesses a Thr-Glu-Tyr motif in the activation loop domain, as do classical MAP kinases. Associates with and is apparently stabilized by HSP90.
Synonyms:	RAGE; RAGE-1; RAGE1; STK30
Note:	MOK Antibody detects endogenous levels of MOK
Protein Families:	Druggable Genome, Protein Kinase



[View online »](#)

Product images:



Western blot analysis on HepG2 cell lysate using MOK Antibody