

## Product datasheet for **TA347784**

### CDK1 Rabbit Polyclonal Antibody

#### Product data:

Product Type:	Primary Antibodies
Applications:	WB
Recommended Dilution:	WB: 1:500-1:2000
Reactivity:	Human, Mouse, Rat
Host:	Rabbit
Isotype:	IgG
Clonality:	Polyclonal
Immunogen:	The immunogen for anti-CDC2 Antibody: A synthesized peptide derived from human CDC2
Formulation:	Rabbit IgG in phosphate buffered saline , pH 7.4, 150mM NaCl, 0.02% sodium azide and 50% glycerol. Store at -20?. Stable for 12 months from date of receipt
Concentration:	lot specific
Purification:	Immunogen affinity purified
Conjugation:	Unconjugated
Storage:	Store at -20°C as received.
Stability:	Stable for 12 months from date of receipt.
Predicted Protein Size:	34 kDa
Gene Name:	cyclin-dependent kinase 1
Database Link:	<a href="#">NP_001124301</a> <a href="#">Entrez Gene 12534 MouseEntrez Gene 54237 RatEntrez Gene 983 Human P06493</a>
Background:	The protein encoded by this gene is a member of the Ser/Thr protein kinase family. This protein is a catalytic subunit of the highly conserved protein kinase complex known as M-phase promoting factor (MPF), which is essential for G1/S and G2/M phase transitions of eukaryotic cell cycle. Mitotic cyclins stably associate with this protein and function as regulatory subunits. The kinase activity of this protein is controlled by cyclin accumulation and destruction through the cell cycle. The phosphorylation and dephosphorylation of this protein also play important regulatory roles in cell cycle control.
Synonyms:	CDC28A; CDK1; DKFZp686L20222; MGC111195

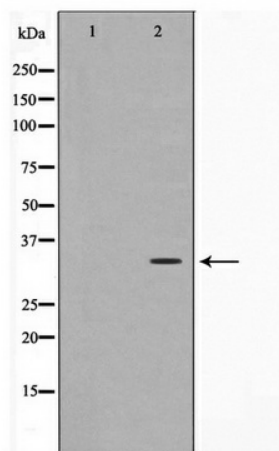


[View online »](#)

**Note:** CDC2 Antibody detects endogenous levels of CDC2

**Protein Families:** Druggable Genome, Protein Kinase, Stem cell - Pluripotency

**Protein Pathways:** Cell cycle, Gap junction, Oocyte meiosis, p53 signaling pathway, Progesterone-mediated oocyte maturation

**Product images:**

Western blot analysis on A2780 cell lysate using CDC2 Antibody