

## Product datasheet for **TA347783**

### Rabphilin 3A (RPH3A) Rabbit Polyclonal Antibody

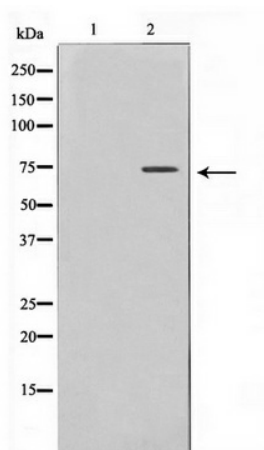
#### Product data:

Product Type:	Primary Antibodies
Applications:	WB
Recommended Dilution:	WB: 1:500-1:2000
Reactivity:	Human, Mouse, Rat
Host:	Rabbit
Isotype:	IgG
Clonality:	Polyclonal
Immunogen:	The immunogen for anti-Rabphilin 3A Antibody: A synthesized peptide derived from human Rabphilin 3A
Formulation:	Rabbit IgG in phosphate buffered saline , pH 7.4, 150mM NaCl, 0.02% sodium azide and 50% glycerol. Store at -20?. Stable for 12 months from date of receipt
Concentration:	lot specific
Purification:	Immunogen affinity purified
Conjugation:	Unconjugated
Storage:	Store at -20°C as received.
Stability:	Stable for 12 months from date of receipt.
Predicted Protein Size:	75 kDa
Gene Name:	rabphilin 3A
Database Link:	<a href="#">NP_055769</a> <a href="#">Entrez Gene 19894 Mouse</a> <a href="#">Entrez Gene 171039 Rat</a> <a href="#">Entrez Gene 22895 Human</a> <a href="#">Q9Y2J0</a>
Background:	rabphilin 3A Protein transport. Probably involved with Ras-related protein Rab-3A in synaptic vesicle traffic and/or synaptic vesicle fusion. Could play a role in neurotransmitter release by regulating membrane flow in the nerve terminal. 2 isoforms of the human protein are produced by alternative splicing.
Synonyms:	KIAA0985
Note:	Rabphilin 3A Antibody detects endogenous levels of Rabphilin 3A



[View online »](#)

## Product images:



Western blot analysis on Raw264.7 cell lysate using Rabphilin 3A Antibody