

## Product datasheet for **TA347782**

### HSP90AA1 Rabbit Polyclonal Antibody

#### Product data:

Product Type:	Primary Antibodies
Applications:	WB
Recommended Dilution:	WB: 1:500-1:2000
Reactivity:	Human, Mouse, Rat
Host:	Rabbit
Isotype:	IgG
Clonality:	Polyclonal
Immunogen:	The immunogen for anti-HSP90A Antibody: A synthesized peptide derived from human HSP90A
Formulation:	Rabbit IgG in phosphate buffered saline , pH 7.4, 150mM NaCl, 0.02% sodium azide and 50% glycerol. Store at -20?. Stable for 12 months from date of receipt
Concentration:	lot specific
Purification:	Immunogen affinity purified
Conjugation:	Unconjugated
Storage:	Store at -20°C as received.
Stability:	Stable for 12 months from date of receipt.
Predicted Protein Size:	85 kDa
Gene Name:	heat shock protein 90kDa alpha family class A member 1
Database Link:	<a href="#">NP_001017963</a> <a href="#">Entrez Gene 15519 Mouse</a> <a href="#">Entrez Gene 299331 Rat</a> <a href="#">Entrez Gene 3320 Human</a> <a href="#">P07900</a>
Background:	HSP90A a molecular chaperone of the heat shock protein 90 family. Has ATPase activity. Known to interact with a wide variety of proteins including steroid hormone receptors, neuropeptide Y, FKBP51/54, and FKBP52. G protein-coupled receptor kinases are stabilized by interacting with HSP 90. Hsp70 and Hsp90 promote tau solubility and tau binding to microtubules, reducing insoluble tau phosphorylation of tau.
Synonyms:	EL52; HSP86; Hsp89; HSP89A; Hsp90; HSP90A; HSP90N; HSPC1; HSPCA; HSPCAL1; HSPCAL4; HSPN; LAP-2; LAP2



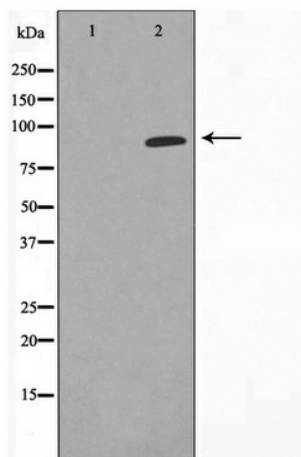
[View online »](#)

**Note:** HSP90A Antibody detects endogenous levels of HSP90A

**Protein Families:** Druggable Genome

**Protein Pathways:** Antigen processing and presentation, NOD-like receptor signaling pathway, Pathways in cancer, Progesterone-mediated oocyte maturation, Prostate cancer

**Product images:**



Western blot analysis on NIH-3T3 cell lysate using HSP90A Antibody