

## Product datasheet for **TA347781**

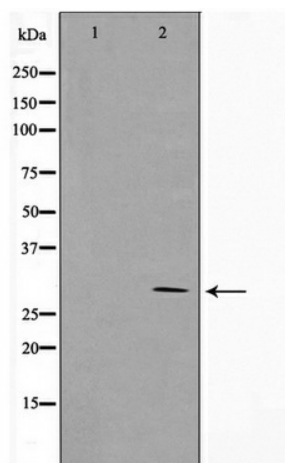
### MRRF Rabbit Polyclonal Antibody

#### Product data:

Product Type:	Primary Antibodies
Applications:	WB
Recommended Dilution:	WB: 1:500-1:2000
Reactivity:	Human, Mouse, Rat
Host:	Rabbit
Isotype:	IgG
Clonality:	Polyclonal
Immunogen:	The immunogen for anti-MRRF Antibody: A synthesized peptide derived from human MRRF
Formulation:	Rabbit IgG in phosphate buffered saline , pH 7.4, 150mM NaCl, 0.02% sodium azide and 50% glycerol. Store at -20?. Stable for 12 months from date of receipt
Concentration:	lot specific
Purification:	Immunogen affinity purified
Conjugation:	Unconjugated
Storage:	Store at -20°C as received.
Stability:	Stable for 12 months from date of receipt.
Predicted Protein Size:	28 kDa
Gene Name:	mitochondrial ribosome recycling factor
Database Link:	<a href="#">NP_954646</a> <a href="#">Entrez Gene 67871 MouseEntrez Gene 311903 RatEntrez Gene 92399 Human Q96E11</a>
Background:	MRRF Responsible for the release of ribosomes from messenger RNA at the termination of protein biosynthesis. May increase the efficiency of translation by recycling ribosomes from one round of translation to another. Belongs to the RRF family. 7 isoforms of the human protein are produced by alternative splicing.
Synonyms:	MRFF; MTRRF; RRF
Note:	MRRF Antibody detects endogenous levels of MRRF
Protein Families:	Transmembrane



[View online »](#)

**Product images:**

Western blot analysis on HeLa cell lysate using MRRF Antibody