

Product datasheet for **TA347777**

Cofilin 2 (CFL2) Rabbit Polyclonal Antibody

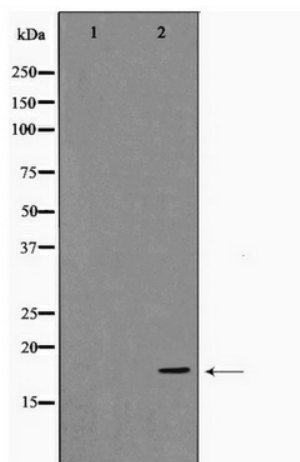
Product data:

Product Type:	Primary Antibodies
Applications:	WB
Reactivity:	Human, Mouse, Rat
Host:	Rabbit
Isotype:	IgG
Clonality:	Polyclonal
Immunogen:	The immunogen for anti-Cofilin Antibody: A synthesized peptide derived from human Cofilin
Formulation:	Rabbit IgG in phosphate buffered saline , pH 7.4, 150mM NaCl, 0.02% sodium azide and 50% glycerol. Store at -20?. Stable for 12 months from date of receipt
Concentration:	lot specific
Purification:	Immunogen affinity purified
Conjugation:	Unconjugated
Storage:	Store at -20°C as received.
Stability:	Stable for 12 months from date of receipt.
Predicted Protein Size:	19 kDa
Gene Name:	cofilin 2
Database Link:	NP_619579 Entrez Gene 12632 Mouse Entrez Gene 366624 Rat Entrez Gene 1073 Human Q9Y281
Background:	cofilin 1 a cytoskeletal protein that controls actin depolymerization. Has a 5-10-fold higher affinity for ATP-actin monomers than cofilin-1. May promote filament assembly rather than disassembly. Two alternatively spliced variants are described.
Synonyms:	NEM7
Note:	Cofilin Antibody detects endogenous levels of Cofilin
Protein Families:	Druggable Genome
Protein Pathways:	Axon guidance, Fc gamma R-mediated phagocytosis, Regulation of actin cytoskeleton



[View online »](#)

Product images:



Western blot analysis on Jurkat cell lysate using Cofilin Antibody