

## Product datasheet for **TA347776**

### GABA A Receptor gamma 1 (GABRG1) Rabbit Polyclonal Antibody

#### Product data:

Product Type:	Primary Antibodies
Applications:	WB
Recommended Dilution:	WB: 1:500-1:2000
Reactivity:	Human, Mouse, Rat
Host:	Rabbit
Isotype:	IgG
Clonality:	Polyclonal
Immunogen:	The immunogen for anti-GABRG1 Antibody: A synthesized peptide derived from human GABRG1
Formulation:	Rabbit IgG in phosphate buffered saline , pH 7.4, 150mM NaCl, 0.02% sodium azide and 50% glycerol. Store at -20?. Stable for 12 months from date of receipt
Concentration:	lot specific
Purification:	Immunogen affinity purified
Conjugation:	Unconjugated
Storage:	Store at -20°C as received.
Stability:	Stable for 12 months from date of receipt.
Predicted Protein Size:	54 kDa
Gene Name:	gamma-aminobutyric acid type A receptor gamma1 subunit
Database Link:	<a href="#">NP_775807</a> <a href="#">Entrez Gene 14405 Mouse</a> <a href="#">Entrez Gene 140674 Rat</a> <a href="#">Entrez Gene 2565 Human</a> <a href="#">Q8N1C3</a>
Background:	The protein encoded by this gene belongs to the ligand-gated ionic channel family. It is an integral membrane protein and plays an important role in inhibiting neurotransmission by binding to the benzodiazepine receptor and opening an integral chloride channel. This gene is clustered with three other family members on chromosome 4.
Synonyms:	DKFZp686H2042; MGC33838
Note:	GABRG1 Antibody detects endogenous levels of GABRG1

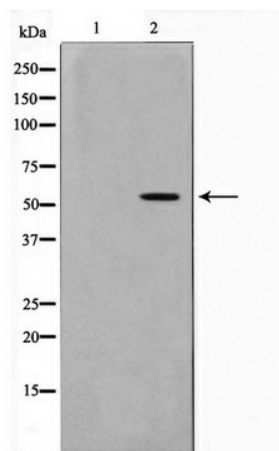


[View online »](#)

**Protein Families:** Druggable Genome, Ion Channels: Cys-loop Receptors, Transmembrane

**Protein Pathways:** Neuroactive ligand-receptor interaction

**Product images:**



Western blot analysis on LOVO cell lysate using GABRG1 Antibody