

## Product datasheet for **TA347775**

### **KDEL3 Rabbit Polyclonal Antibody**

#### **Product data:**

<b>Product Type:</b>	Primary Antibodies
<b>Applications:</b>	WB
<b>Recommended Dilution:</b>	WB: 1:500-1:2000
<b>Reactivity:</b>	Human, Mouse
<b>Host:</b>	Rabbit
<b>Isotype:</b>	IgG
<b>Clonality:</b>	Polyclonal
<b>Immunogen:</b>	The immunogen for anti-ERD23 Antibody: A synthesized peptide derived from human ERD23
<b>Formulation:</b>	Rabbit IgG in phosphate buffered saline , pH 7.4, 150mM NaCl, 0.02% sodium azide and 50% glycerol. Store at -20?. Stable for 12 months from date of receipt
<b>Concentration:</b>	lot specific
<b>Purification:</b>	Immunogen affinity purified
<b>Conjugation:</b>	Unconjugated
<b>Storage:</b>	Store at -20°C as received.
<b>Stability:</b>	Stable for 12 months from date of receipt.
<b>Predicted Protein Size:</b>	28 kDa
<b>Gene Name:</b>	KDEL endoplasmic reticulum protein retention receptor 3
<b>Database Link:</b>	<a href="#">NP_057839</a> <a href="#">Entrez Gene 105785 Mouse</a> <a href="#">Entrez Gene 11015 Human</a> <a href="#">O43731</a>
<b>Background:</b>	KDEL3 Required for the retention of luminal endoplasmic reticulum proteins. Determines the specificity of the luminal ER protein retention system. Also required for normal vesicular traffic through the Golgi. This receptor recognizes K-D-E-L. Belongs to the ERD2 family. 2 isoforms of the human protein are produced by alternative splicing. Note: This description may include information from UniProtKB.
<b>Synonyms:</b>	ERD2L3
<b>Note:</b>	ERD23 Antibody detects endogenous levels of ERD23

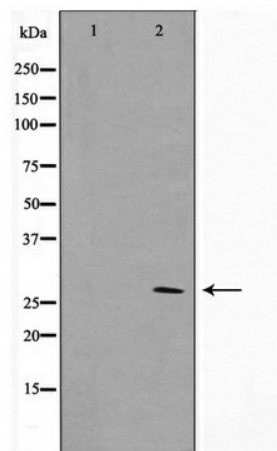


[View online »](#)

Protein Families: Druggable Genome, Transmembrane

Protein Pathways: Vibrio cholerae infection

**Product images:**



Western blot analysis on NIH-3T3 cell lysate using ERD23 Antibody