

Product datasheet for **TA347774**

ZRANB2 Rabbit Polyclonal Antibody

Product data:

Product Type:	Primary Antibodies
Applications:	WB
Recommended Dilution:	WB: 1:500-1:2000
Reactivity:	Human, Mouse, Rat
Host:	Rabbit
Isotype:	IgG
Clonality:	Polyclonal
Immunogen:	The immunogen for anti-ZNF265 Antibody: A synthesized peptide derived from human ZNF265
Formulation:	Rabbit IgG in phosphate buffered saline , pH 7.4, 150mM NaCl, 0.02% sodium azide and 50% glycerol. Store at -20?. Stable for 12 months from date of receipt
Concentration:	lot specific
Purification:	Immunogen affinity purified
Conjugation:	Unconjugated
Storage:	Store at -20°C as received.
Stability:	Stable for 12 months from date of receipt.
Predicted Protein Size:	34 kDa
Gene Name:	zinc finger RANBP2-type containing 2
Database Link:	NP_976225 Entrez Gene 53861 Mouse Entrez Gene 58821 Rat Entrez Gene 9406 Human O95218
Background:	ZNF265 Splice factor required for alternative splicing of TRA2B/SFRS10 transcripts. May interfere with constitutive 5'- splice site selection. Belongs to the ZRANB2 family. Interacts with the C-terminal half of SNRNP70, the Arg/Ser-rich domain of XE7 as well as with U2AF1 and CLK1. 2 isoforms of the human protein are produced by alternative splicing. Note: This description may include information from UniProtKB.
Synonyms:	ZIS; ZIS1; ZIS2; ZNF265

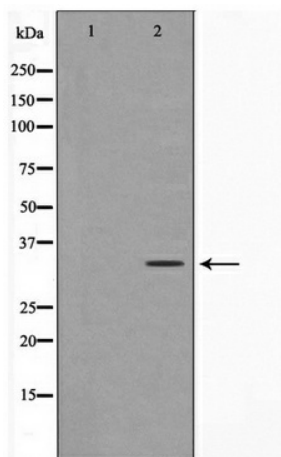


[View online »](#)

Note: ZNF265 Antibody detects endogenous levels of ZNF265

Protein Families: Druggable Genome, Transcription Factors

Product images:



Western blot analysis on HeLa cell lysate using ZNF265 Antibody