

Product datasheet for **TA347773**

Oligodendrocyte Specific Protein (CLDN11) Rabbit Polyclonal Antibody

Product data:

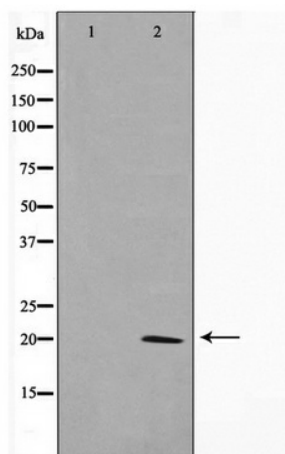
Product Type:	Primary Antibodies
Applications:	WB
Recommended Dilution:	WB: 1:500-1:2000
Reactivity:	Human, Mouse, Rat
Host:	Rabbit
Isotype:	IgG
Clonality:	Polyclonal
Immunogen:	The immunogen for anti-Claudin 11 Antibody: A synthesized peptide derived from human Claudin 11
Formulation:	Rabbit IgG in phosphate buffered saline , pH 7.4, 150mM NaCl, 0.02% sodium azide and 50% glycerol. Store at -20?. Stable for 12 months from date of receipt
Concentration:	lot specific
Purification:	Immunogen affinity purified
Conjugation:	Unconjugated
Storage:	Store at -20°C as received.
Stability:	Stable for 12 months from date of receipt.
Predicted Protein Size:	20 kDa
Gene Name:	claudin 11
Database Link:	NP_005593 Entrez Gene 18417 Mouse Entrez Gene 84588 Rat Entrez Gene 5010 Human O75508
Background:	claudin 11 Plays a major role in tight junction-specific obliteration of the intercellular space, through calcium- independent cell-adhesion activity. Belongs to the claudin family. Interacts with tetraspanin-3/TSPAN3. Note: This description may include information from UniProtKB.
Synonyms:	OSP; OTM
Note:	Claudin 11 Antibody detects endogenous levels of Claudin 11
Protein Families:	Transmembrane



[View online »](#)

Protein Pathways: Cell adhesion molecules (CAMs), Leukocyte transendothelial migration, Tight junction

Product images:



Western blot analysis on mouse brain cell lysate using Claudin 11 Antibody