

Product datasheet for **TA347772**

PFDN1 Rabbit Polyclonal Antibody

Product data:

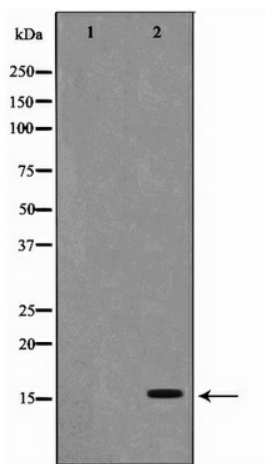
Product Type:	Primary Antibodies
Applications:	WB
Recommended Dilution:	WB: 1:500-1:2000
Reactivity:	Human, Mouse
Host:	Rabbit
Isotype:	IgG
Clonality:	Polyclonal
Immunogen:	The immunogen for anti-PFDN1 Antibody: A synthesized peptide derived from human PFDN1
Formulation:	Rabbit IgG in phosphate buffered saline , pH 7.4, 150mM NaCl, 0.02% sodium azide and 50% glycerol. Store at -20?. Stable for 12 months from date of receipt
Concentration:	lot specific
Purification:	Immunogen affinity purified
Conjugation:	Unconjugated
Storage:	Store at -20°C as received.
Stability:	Stable for 12 months from date of receipt.
Predicted Protein Size:	14 kDa
Gene Name:	prefoldin subunit 1
Database Link:	NP_002613 Entrez Gene 67199 Mouse Entrez Gene 5201 Human O60925
Background:	PFDN1 Binds specifically to cytosolic chaperonin (c-CPN) and transfers target proteins to it. Binds to nascent polypeptide chain and promotes folding in an environment in which there are many competing pathways for nonnative proteins. Belongs to the prefoldin subunit beta family. Heterohexamer of two PFD-alpha type and four PFD-beta type subunits. Note: This description may include information from UniProtKB.
Synonyms:	PDF; PFD1
Note:	PFDN1 Antibody detects endogenous levels of PFDN1



[View online »](#)

Protein Families: Transcription Factors

Product images:



Western blot analysis on RAW264.7 cell lysate using PFDN1 Antibody