

Product datasheet for **TA347768**

FOX E1 Rabbit Polyclonal Antibody

Product data:

Product Type:	Primary Antibodies
Applications:	WB
Recommended Dilution:	WB: 1:500-1:2000
Reactivity:	Human, Mouse, Rat
Host:	Rabbit
Isotype:	IgG
Clonality:	Polyclonal
Immunogen:	The immunogen for anti-TTF2 Antibody: A synthesized peptide derived from human TTF2
Formulation:	Rabbit IgG in phosphate buffered saline , pH 7.4, 150mM NaCl, 0.02% sodium azide and 50% glycerol. Store at -20?. Stable for 12 months from date of receipt
Concentration:	lot specific
Purification:	Immunogen affinity purified
Conjugation:	Unconjugated
Storage:	Store at -20°C as received.
Stability:	Stable for 12 months from date of receipt.
Predicted Protein Size:	34 kDa
Gene Name:	forkhead box E1
Database Link:	NP_004464 Entrez Gene 110805 MouseEntrez Gene 192274 RatEntrez Gene 2304 Human O00358
Background:	This intronless gene belongs to the forkhead family of transcription factors, which is characterized by a distinct forkhead domain. This gene functions as a thyroid transcription factor which likely plays a crucial role in thyroid morphogenesis. Mutations in this gene are associated with congenital hypothyroidism and cleft palate with thyroid dysgenesis. The map localization of this gene suggests it may also be a candidate gene for squamous cell epithelioma and hereditary sensory neuropathy type I.
Synonyms:	FKHL15; FOXE2; HFKH4; HFKL5; TITF2; TTF-2; TTF2

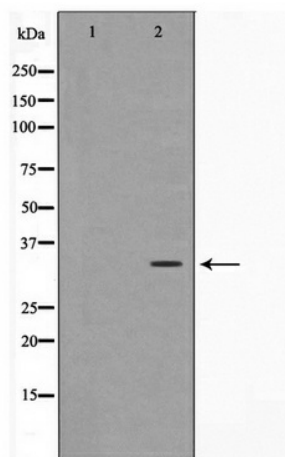


[View online »](#)

Note: TTF2 Antibody detects endogenous levels of TTF2

Protein Families: Druggable Genome, Transcription Factors

Product images:



Western blot analysis on HuvEc cell lysate using TTF2 Antibody