

Product datasheet for **TA347767**

Cytokeratin 14 (KRT14) Rabbit Polyclonal Antibody

Product data:

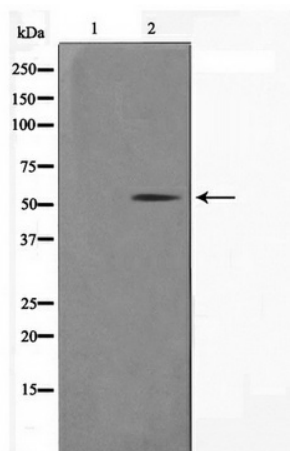
Product Type:	Primary Antibodies
Applications:	WB
Recommended Dilution:	WB: 1:500-1:2000
Reactivity:	Human, Mouse, Rat
Host:	Rabbit
Isotype:	IgG
Clonality:	Polyclonal
Immunogen:	The immunogen for anti-Keratin 14 Antibody: A synthesized peptide derived from human Keratin 14
Formulation:	Rabbit IgG in phosphate buffered saline , pH 7.4, 150mM NaCl, 0.02% sodium azide and 50% glycerol. Store at -20?. Stable for 12 months from date of receipt
Concentration:	lot specific
Purification:	Immunogen affinity purified
Conjugation:	Unconjugated
Storage:	Store at -20°C as received.
Stability:	Stable for 12 months from date of receipt.
Predicted Protein Size:	52 kDa
Gene Name:	keratin 14
Database Link:	NP_000517 Entrez Gene 16664 Mouse Entrez Gene 287701 Rat Entrez Gene 3861 Human P02533
Background:	K14 a type I cytoskeletal keratin. The keratins are intermediate filament proteins responsible for the structural integrity of epithelial cells and are subdivided into cytokeratins and hair keratins. There are two types of cytoskeletal and microfibrillar keratin: type I (acidic; 40-55 kDa) [K9 to K20] and type II (neutral to basic; 56-70 kDa) [K1 to K8]. Both a basic and an acidic keratin are required for filament assembly. Generally associates with K5. Note: This description may include information from UniProtKB.
Synonyms:	CK14; EBS3; EBS4; K14; NFJ



[View online »](#)

Note: Keratin 14 Antibody detects endogenous levels of Keratin 14

Product images:



Western blot analysis on NIH-3T3 cell lysate using Keratin 14 Antibody