

Product datasheet for **TA347764**

STARD13 Rabbit Polyclonal Antibody

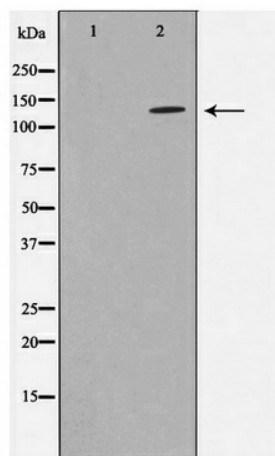
Product data:

Product Type:	Primary Antibodies
Applications:	WB
Recommended Dilution:	WB: 1:500-1:2000
Reactivity:	Human, Mouse
Host:	Rabbit
Isotype:	IgG
Clonality:	Polyclonal
Immunogen:	The immunogen for anti-STA13 Antibody: A synthesized peptide derived from human STA13
Formulation:	Rabbit IgG in phosphate buffered saline , pH 7.4, 150mM NaCl, 0.02% sodium azide and 50% glycerol. Store at -20?. Stable for 12 months from date of receipt
Concentration:	lot specific
Purification:	Immunogen affinity purified
Conjugation:	Unconjugated
Storage:	Store at -20°C as received.
Stability:	Stable for 12 months from date of receipt.
Predicted Protein Size:	125 kDa
Gene Name:	StAR related lipid transfer domain containing 13
Database Link:	NP_821074 Entrez Gene 243362 Mouse Entrez Gene 90627 Human Q9Y3M8
Background:	StARD13 GTPase-activating protein for RhoA, and perhaps for Cdc42. May be involved in regulation of cytoskeletal reorganization, cell proliferation and cell motility. Acts a tumor suppressor in hepatocellular carcinoma cells. Homodimer. Interacts with TAX1BP1. 5 isoforms of the human protein are produced by alternative splicing.
Synonyms:	ARHGAP37; DLC2; GT650; LINC00464
Note:	STA13 Antibody detects endogenous levels of STA13



[View online »](#)

Product images:



Western blot analysis on K562 cell lysate using STA13 Antibody