

Product datasheet for **TA347763**

MAST4 Rabbit Polyclonal Antibody

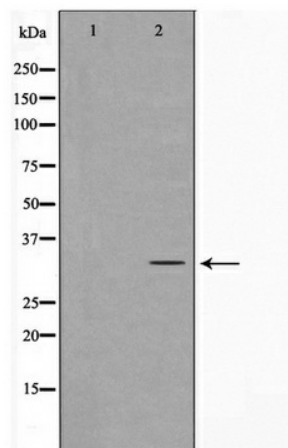
Product data:

Product Type:	Primary Antibodies
Applications:	WB
Recommended Dilution:	WB: 1:500-1:2000
Reactivity:	Human, Mouse
Host:	Rabbit
Isotype:	IgG
Clonality:	Polyclonal
Immunogen:	The immunogen for anti-MAST4 Antibody: A synthesized peptide derived from human MAST4
Formulation:	Rabbit IgG in phosphate buffered saline , pH 7.4, 150mM NaCl, 0.02% sodium azide and 50% glycerol. Store at -20?. Stable for 12 months from date of receipt
Concentration:	lot specific
Purification:	Immunogen affinity purified
Conjugation:	Unconjugated
Storage:	Store at -20°C as received.
Stability:	Stable for 12 months from date of receipt.
Predicted Protein Size:	36 kDa
Gene Name:	microtubule associated serine/threonine kinase family member 4
Database Link:	NP_942123 Entrez Gene 328329 Mouse Entrez Gene 375449 Human Q15021
Background:	MAST4 belongs to the protein kinase superfamily. Ser/Thr protein kinase family. 3 isoforms of the human protein are produced by alternative splicing.
Synonyms:	DKFZp686E18148; DKFZp686N1467; FLJ16540; FLJ33039; KIAA0303
Note:	MAST4 Antibody detects endogenous levels of MAST4
Protein Families:	Druggable Genome, Protein Kinase



[View online »](#)

Product images:



Western blot analysis on Jurkat cell lysate using MAST4 Antibody