

Product datasheet for **TA347762**

MOB4A (MOB1B) Rabbit Polyclonal Antibody

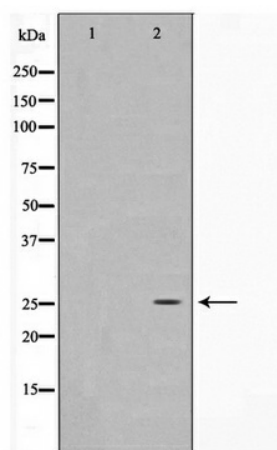
Product data:

Product Type:	Primary Antibodies
Applications:	WB
Recommended Dilution:	WB: 1:500-1:2000
Reactivity:	Human, Mouse
Host:	Rabbit
Isotype:	IgG
Clonality:	Polyclonal
Immunogen:	The immunogen for anti-MOL1A Antibody: A synthesized peptide derived from human MOL1A
Formulation:	Rabbit IgG in phosphate buffered saline , pH 7.4, 150mM NaCl, 0.02% sodium azide and 50% glycerol. Store at -20?. Stable for 12 months from date of receipt
Concentration:	lot specific
Purification:	Immunogen affinity purified
Conjugation:	Unconjugated
Storage:	Store at -20°C as received.
Stability:	Stable for 12 months from date of receipt.
Predicted Protein Size:	25 kDa
Gene Name:	MOB kinase activator 1B
Database Link:	NP_001231695 Entrez Gene 68473 Mouse Entrez Gene 92597 Human Q7L9L4
Background:	MOBKL1A stimulates the kinase activity of STK38L. Binds STK38L.
Synonyms:	MATS2; MOB4A; MOBKL1A
Note:	MOL1A Antibody detects endogenous levels of MOL1A



[View online »](#)

Product images:



Western blot analysis on 293 cell lysate using MOB1A Antibody