

Product datasheet for **TA347760**

PREI3 (MOB4) Rabbit Polyclonal Antibody

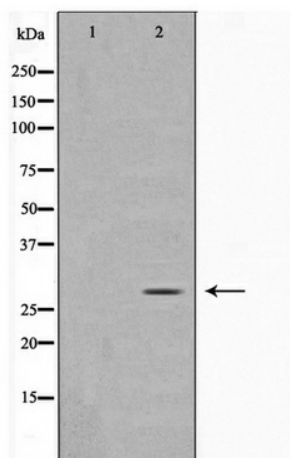
Product data:

Product Type:	Primary Antibodies
Applications:	WB
Recommended Dilution:	WB: 1:500-1:2000
Reactivity:	Human, Mouse, Rat
Host:	Rabbit
Isotype:	IgG
Clonality:	Polyclonal
Immunogen:	The immunogen for anti-MOBL3 Antibody: A synthesized peptide derived from human MOBL3
Formulation:	Rabbit IgG in phosphate buffered saline , pH 7.4, 150mM NaCl, 0.02% sodium azide and 50% glycerol. Store at -20?. Stable for 12 months from date of receipt
Concentration:	lot specific
Purification:	Immunogen affinity purified
Conjugation:	Unconjugated
Storage:	Store at -20°C as received.
Stability:	Stable for 12 months from date of receipt.
Predicted Protein Size:	26 kDa
Gene Name:	MOB family member 4, phocein
Database Link:	NP_001094289 Entrez Gene 19070 Mouse Entrez Gene 171050 Rat Entrez Gene 25843 Human Q9Y3A3
Background:	This gene was identified based on its similarity with the mouse counterpart. Studies of the mouse counterpart suggest that the expression of this gene may be regulated during oocyte maturation and preimplantation following zygotic gene activation. Alternatively spliced transcript variants encoding distinct isoforms have been observed.
Synonyms:	2C4D; CGI-95; MOB1; MOB3; MOBKL3; PHOCN; PREI3
Note:	MOBL3 Antibody detects endogenous levels of MOBL3



[View online »](#)

Product images:



Western blot analysis on rat brain cell lysate using MOB4 Antibody