

Product datasheet for **TA347759**

GK2 Rabbit Polyclonal Antibody

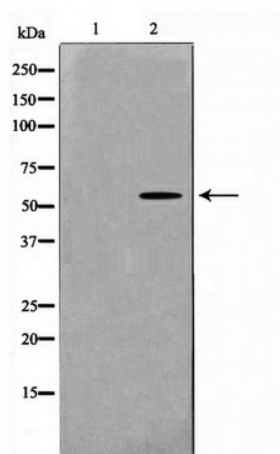
Product data:

Product Type:	Primary Antibodies
Applications:	WB
Recommended Dilution:	WB: 1:500-1:2000
Reactivity:	Human
Host:	Rabbit
Isotype:	IgG
Clonality:	Polyclonal
Immunogen:	The immunogen for anti-GK2 Antibody: A synthesized peptide derived from human GK2
Formulation:	Rabbit IgG in phosphate buffered saline , pH 7.4, 150mM NaCl, 0.02% sodium azide and 50% glycerol. Store at -20?. Stable for 12 months from date of receipt
Concentration:	lot specific
Purification:	Immunogen affinity purified
Conjugation:	Unconjugated
Storage:	Store at -20°C as received.
Stability:	Stable for 12 months from date of receipt.
Predicted Protein Size:	61 kDa
Gene Name:	glycerol kinase 2
Database Link:	NP_149991 Entrez Gene 2712 Human Q14410
Background:	GK2 Key enzyme in the regulation of glycerol uptake and metabolism. Belongs to the FGGY kinase family.
Synonyms:	GKP2; GKTA
Note:	GK2 Antibody detects endogenous levels of GK2
Protein Families:	Druggable Genome
Protein Pathways:	Glycerolipid metabolism, Metabolic pathways, PPAR signaling pathway



[View online »](#)

Product images:



Western blot analysis on HeLa cell lysate using GK2 Antibody