

Product datasheet for **TA347758**

Homeobox protein SIX6 (SIX6) Rabbit Polyclonal Antibody

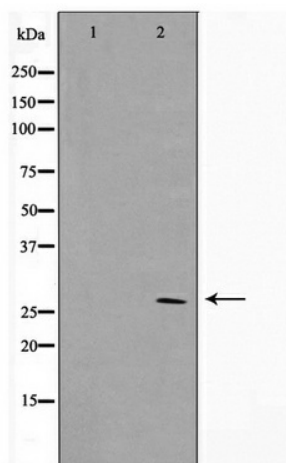
Product data:

Product Type:	Primary Antibodies
Applications:	WB
Recommended Dilution:	WB: 1:500-1:2000
Reactivity:	Human, Mouse, Rat
Host:	Rabbit
Isotype:	IgG
Clonality:	Polyclonal
Immunogen:	The immunogen for anti-SIX6 Antibody: A synthesized peptide derived from human SIX6
Formulation:	Rabbit IgG in phosphate buffered saline , pH 7.4, 150mM NaCl, 0.02% sodium azide and 50% glycerol. Store at -20?. Stable for 12 months from date of receipt
Concentration:	lot specific
Purification:	Immunogen affinity purified
Conjugation:	Unconjugated
Storage:	Store at -20°C as received.
Stability:	Stable for 12 months from date of receipt.
Predicted Protein Size:	28 kDa
Gene Name:	SIX homeobox 6
Database Link:	NP_031400 Entrez Gene 20476 MouseEntrez Gene 314221 RatEntrez Gene 4990 Human O95475
Background:	SIX6 May be involved in eye development. Belongs to the SIX/Sine oculis homeobox family. Note: This description may include information from UniProtKB.
Synonyms:	MCOPCT2; ODRMD; OPTX2; Six9
Note:	SIX6 Antibody detects endogenous levels of SIX6



[View online »](#)

Product images:



Western blot analysis on HuvEc cell lysate using SIX6 Antibody