

## Product datasheet for **TA347757**

### OGR1 (GPR68) Rabbit Polyclonal Antibody

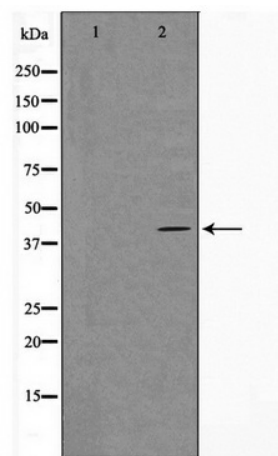
#### Product data:

|                         |   |
|-------------------------|---|
| Product Type:           | Primary Antibodies  |
| Applications:           | WB  |
| Recommended Dilution:   | WB: 1:500-1:2000  |
| Reactivity:             | Human, Mouse  |
| Host:                   | Rabbit  |
| Isotype:                | IgG   |
| Clonality:              | Polyclonal  |
| Immunogen:              | The immunogen for anti-SPR1 Antibody: A synthesized peptide derived from human SPR1   |
| Formulation:            | Rabbit IgG in phosphate buffered saline , pH 7.4, 150mM NaCl, 0.02% sodium azide and 50% glycerol. Store at -20?. Stable for 12 months from date of receipt |
| Concentration:          | lot specific  |
| Purification:           | Immunogen affinity purified   |
| Conjugation:            | Unconjugated  |
| Storage:                | Store at -20°C as received.   |
| Stability:              | Stable for 12 months from date of receipt.  |
| Predicted Protein Size: | 41 kDa  |
| Gene Name:              | G protein-coupled receptor 68   |
| Database Link:          | <a href="#">NP_001171147</a><br><a href="#">Entrez Gene 238377 Mouse</a> <a href="#">Entrez Gene 8111 Human</a><br><a href="#">Q15743</a>                   |
| Background:             | Protein type: Secreted; Secreted, signal peptide Cellular Component: extracellular region   |
| Synonyms:               | GPR12A; OGR1  |
| Note:                   | SPR1 Antibody detects endogenous levels of SPR1   |
| Protein Families:       | Druggable Genome, GPCR, Transmembrane   |



[View online »](#)

## Product images:



Western blot analysis on Jurkat cell lysate using SPR1 Antibody