

Product datasheet for **TA347756**

ATPBD3 (CTU1) Rabbit Polyclonal Antibody

Product data:

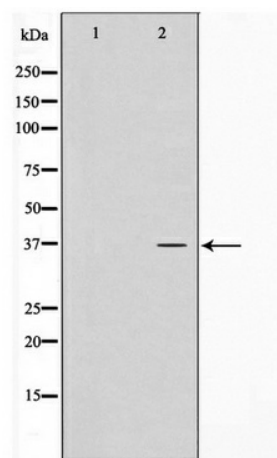
Product Type:	Primary Antibodies
Applications:	WB
Recommended Dilution:	WB: 1:500-1:2000
Reactivity:	Human
Host:	Rabbit
Isotype:	IgG
Clonality:	Polyclonal
Immunogen:	The immunogen for anti-ATPBD3 Antibody: A synthesized peptide derived from human ATPBD3
Formulation:	Rabbit IgG in phosphate buffered saline , pH 7.4, 150mM NaCl, 0.02% sodium azide and 50% glycerol. Store at -20?. Stable for 12 months from date of receipt
Concentration:	lot specific
Purification:	Immunogen affinity purified
Conjugation:	Unconjugated
Storage:	Store at -20°C as received.
Stability:	Stable for 12 months from date of receipt.
Predicted Protein Size:	36 kDa
Gene Name:	cytosolic thiouridylase subunit 1
Database Link:	NP_660275 Entrez Gene 90353 Human Q7Z7A3
Background:	ATPBD3 Plays a central role in 2-thiolation of mcm(5)S(2)U at tRNA wobble positions of tRNA(Lys), tRNA(Glu) and tRNA(Gln). Directly binds tRNAs and probably acts by catalyzing adenylation of tRNAs, an intermediate required for 2-thiolation. It is unclear whether it acts as a sulfurtransferase that transfers sulfur from thiocarboxylated URM1 onto the uridine of tRNAs at wobble position. Belongs to the ttCA family.
Synonyms:	ATPBD3; NCS6



[View online »](#)

Note: ATPBD3 Antibody detects endogenous levels of ATPBD3

Product images:



Western blot analysis on LOVO cell lysate using ATPBD3 Antibody