

Product datasheet for **TA347754**

Cytochrome p450 2J2 (CYP2J2) Rabbit Polyclonal Antibody

Product data:

Product Type:	Primary Antibodies
Applications:	WB
Recommended Dilution:	WB: 1:500-1:2000
Reactivity:	Human
Host:	Rabbit
Isotype:	IgG
Clonality:	Polyclonal
Immunogen:	The immunogen for anti-Cytochrome P450 2J2 Antibody: A synthesized peptide derived from human Cytochrome P450 2J2
Formulation:	Rabbit IgG in phosphate buffered saline , pH 7.4, 150mM NaCl, 0.02% sodium azide and 50% glycerol. Store at -20?. Stable for 12 months from date of receipt
Concentration:	lot specific
Purification:	Immunogen affinity purified
Conjugation:	Unconjugated
Storage:	Store at -20°C as received.
Stability:	Stable for 12 months from date of receipt.
Predicted Protein Size:	50 kDa
Gene Name:	cytochrome P450 family 2 subfamily J member 2
Database Link:	NP_000766 Entrez Gene 1573 Human P51589
Background:	This gene encodes a member of the cytochrome P450 superfamily of enzymes. The cytochrome P450 proteins are monooxygenases which catalyze many reactions involved in drug metabolism and synthesis of cholesterol, steroids and other lipids. This protein localizes to the endoplasmic reticulum and is thought to be the predominant enzyme responsible for epoxidation of endogenous arachidonic acid in cardiac tissue.
Synonyms:	CPJ2



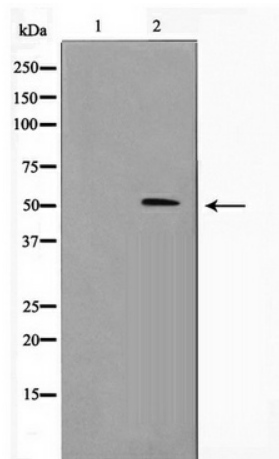
[View online »](#)

Note: Cytochrome P450 2J2 Antibody detects endogenous levels of Cytochrome P450 2J2

Protein Families: Druggable Genome, P450, Transmembrane

Protein Pathways: Arachidonic acid metabolism, Linoleic acid metabolism, Metabolic pathways

Product images:



Western blot analysis on HT29 cell lysate using
Cytochrome P450 2J2 Antibody