

Product datasheet for **TA347753**

GAD67 (GAD1) Rabbit Polyclonal Antibody

Product data:

Product Type:	Primary Antibodies
Applications:	WB
Recommended Dilution:	WB: 1:500-1:2000
Reactivity:	Human, Mouse
Host:	Rabbit
Isotype:	IgG
Clonality:	Polyclonal
Immunogen:	The immunogen for anti-GAD1/2 Antibody: A synthesized peptide derived from human GAD1/2
Formulation:	Rabbit IgG in phosphate buffered saline , pH 7.4, 150mM NaCl, 0.02% sodium azide and 50% glycerol. Store at -20?. Stable for 12 months from date of receipt
Concentration:	lot specific
Purification:	Immunogen affinity purified
Conjugation:	Unconjugated
Storage:	Store at -20°C as received.
Stability:	Stable for 12 months from date of receipt.
Predicted Protein Size:	65 kDa
Gene Name:	glutamate decarboxylase 1
Database Link:	NP_000808 Entrez Gene 14415 Mouse Entrez Gene 2571 Human Q99259
Background:	GAD2 Catalyzes the production of GABA. Homodimer. Belongs to the group II decarboxylase family. GAD67 Catalyzes the production of GABA. Homodimer. Isoform 3 is expressed in pancreatic islets, testis, adrenal cortex, and perhaps other endocrine tissues, but not in brain. Belongs to the group II decarboxylase family. 3 isoforms of the human protein are produced by alternative splicing.
Synonyms:	CPSQ1; GAD; SCP

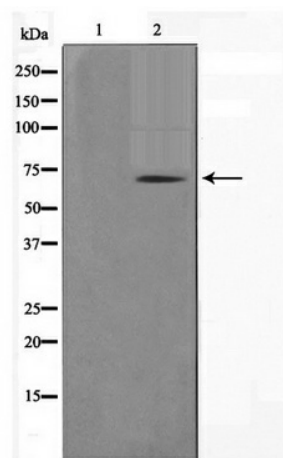


[View online »](#)

Note: GAD1/2 Antibody detects endogenous levels of GAD1/2

Protein Families: Druggable Genome

Protein Pathways: Alanine, aspartate and glutamate metabolism, beta-Alanine metabolism, Butanoate metabolism, Metabolic pathways, Taurine and hypotaurine metabolism, Type I diabetes mellitus

Product images:

Western blot analysis on mouse brain cell lysate using GAD1/2 Antibody